

# TENNESSEE

## LAW ENFORCEMENT OFFICERS KILLED OR ASSAULTED



# 2012





**BILL HASLAM**  
Governor

**TENNESSEE BUREAU OF INVESTIGATION**

901 R.S. Gass Boulevard  
Nashville, Tennessee 37216-2639  
(615) 744-4000  
TDD (615) 744-4001



**MARK GWYN**  
Director

April 25, 2013

Ladies and Gentlemen:

I would like to present the 2012 Law Enforcement Officers Killed or Assaulted (LEOKA) Report. This is the annual report published by the TBI presenting information on reported incidents of assaults or deaths of law enforcement officers in the line of duty that occurred in Tennessee. The information contained in the report is based on crime statistics information submitted by law enforcement agencies in Tennessee to TBI's Tennessee Incident Based Reporting System (TIBRS) program. TIBRS is the state version of the FBI's National Incident Based Reporting System (NIBRS) program. The information collected by TBI conforms to the national standard as presented in the FBI's annual LEOKA report. Please see [www.tncrimeonline.com](http://www.tncrimeonline.com) for additional information.

I am very proud of the efforts of all participating law enforcement agencies in the state to provide the data necessary to produce this report. Our combined efforts have resulted in a successful program and this annual report providing information on incidents involving assaults and deaths of our law enforcement officials.

Sincerely,

Mark Gwyn  
Director



## Summary

A total of 229 Tennessee agencies reported Law Enforcement Officers Killed or Assaulted (LEOKA) for the year 2012.

### LEOKA Reporting Agencies

83 Sheriff's Offices  
145 Police Departments  
7 Colleges/Universities  
1 Judicial District Drug Task Forces  
2 State Agencies  
1 State Park

One officer was reported as feloniously killed in the line of duty. The officer was reported by the Memphis Police Department with the activity type of All Other.

A total of 1,883 LEOKA incidents were reported. The incidents involved one of eleven Activity Types. The Activity Type most frequently reported was Responding to Disturbance – 30.0% (564). The second most frequently reported was Attempting Other Arrest – 22.3% (419). The Activity Type reported with the least frequency was Robbery in Progress – 0.8% (14).

The total number of LEOKA Injuries reported for 2012 was 1,829. The most frequently reported Injury Type was None at 68.6% (1,254). The second most frequently reported Injury Type was Apparent Minor Injuries at 28.0% (512). The following breakdown shows the remaining Injury Types reported: Apparent Broken Bones – 1.0% (18), Severe Lacerations – 0.5% (10), Possible Internal Injuries – 0.6% (11), Other Major Injuries – 1.1% (20), Unconsciousness – 0.2% (3), and Loss of Teeth – 0.1% (1). The total number of Injury Types will not equal the total number of incidents since up to five (5) different Injury Types per Victim may be reported.

A total of 1,911 Weapons were reported. The most frequently reported Weapon Type was Personal Weapon at 64.3% (1,229), which involves the use of hands, fists or feet. A wide variety of Weapon Types were reported for the remaining 35.7% (682). No agencies reported incidents involving the Weapon Types of Firearm – Automatic (Type Not Stated), Other Firearm – Automatic, Rifle – Automatic, Explosives, or Fire/incendiary Device,. The total number of Weapon Types will not equal the total number of Injury Types or Activity Types since up to three (3) Weapon Types per offense may be reported.



## QUICK FACTS

- ◆ The number of reported LEOKA incidents increased 3.1% from 2011. There were 1,883 reported LEOKA incidents in 2012 compared to 1,826 reported in 2011.
- ◆ The most frequently reported weapon type was Personal Weapons (Fist, Hands, Feet) at 64.3%.
- ◆ Firearms were reported as a Weapon Type 9.9% of the time.
- ◆ The largest percentages of the incidents reported occurred on Saturday (17.4%) and Sunday (16.3%).
- ◆ The largest percentage of LEOKA incidents were reported as occurring between 6:00 p.m. to 12:00 a.m. (39.3%).
- ◆ The most frequently reported location for LEOKA incidents was Residence/Home at 34.4%. The second most frequently reported location was Highway/Road/Alley at 26.3%.
- ◆ A total of 1,705 LEOKA incidents were cleared resulting in a 90.6% clearance rate. A total of 1,679 (89.2%) were cleared by Arrest and the remaining 26 (1.4%) were cleared Exceptionally.
- ◆ The most frequently reported Vehicle Assignments were One Officer Vehicle – Assisted (40.4%) and One Officer Vehicle – Alone (30.0%).

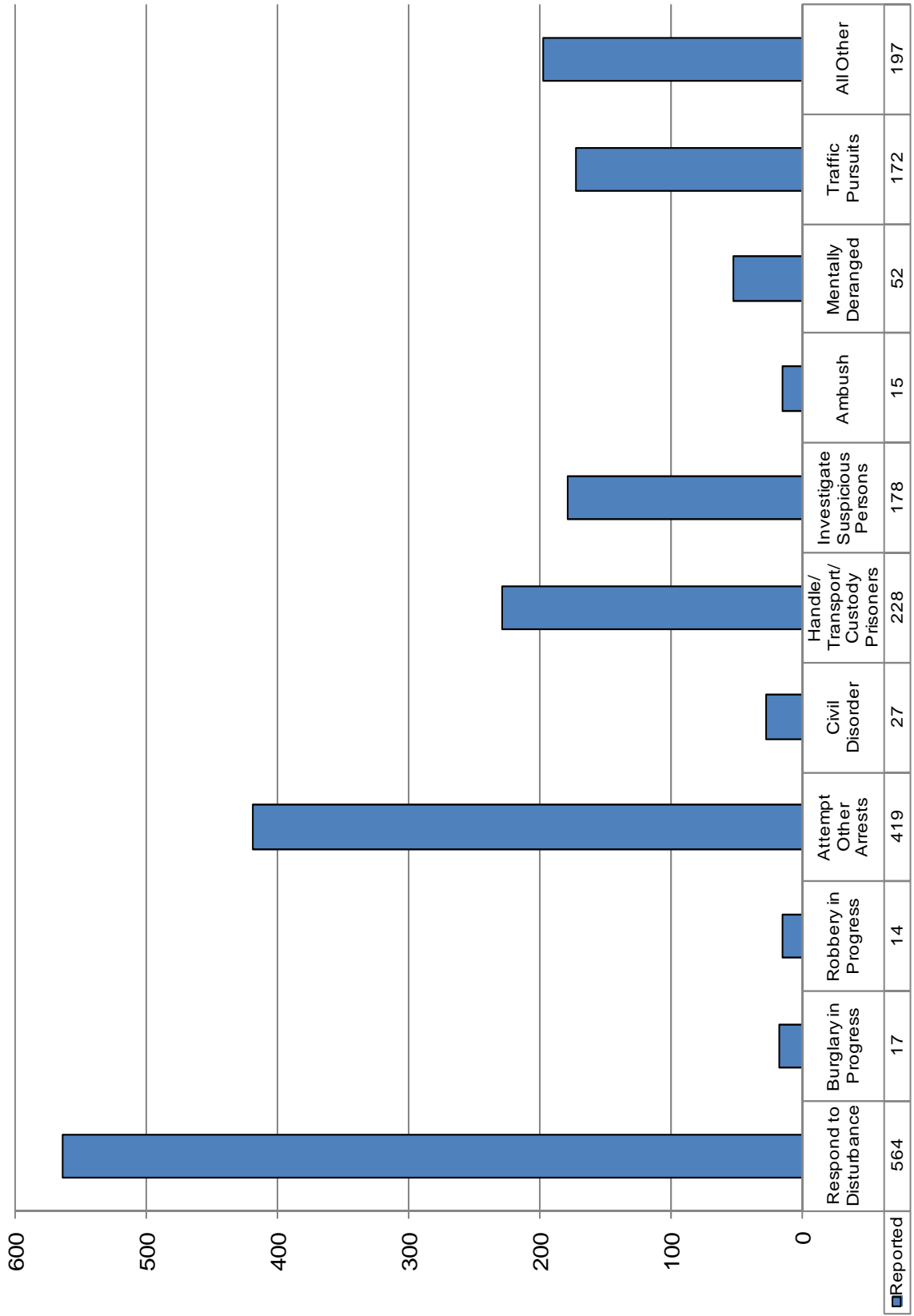




LEOKA Activity Type by Vehicle Assignment																
Activity	Two Officer Vehicle		One Officer Vehicle		Detective or Special Assignment		Other		Total							
	Vehicle	Officer	Special Assignment		Other		Assisted	Total								
			Alone	Assisted	Alone	Assisted										
Disturbance Call	49	8.7%	174	30.9%	282	50.0%	4	0.7%	2	0.4%	14	2.5%	39	6.9%	564	100.0%
Burglary	2	11.8%	3	17.6%	11	64.7%	0	0.0%	1	5.9%	0	0.0%	0	0.0%	17	100.0%
Robbery	3	21.4%	7	50.0%	4	28.6%	0	0.0%	0	0.0%	0	0.0%	0	0.0%	14	100.0%
Attempting Other	57	13.6%	106	25.3%	193	46.1%	4	1.0%	25	6.0%	9	2.1%	25	6.0%	419	100.0%
Civil Disorder	3	11.1%	3	11.1%	9	33.3%	0	0.0%	3	11.1%	6	22.2%	3	11.1%	27	100.0%
Prisoner Custody	12	5.3%	52	22.8%	61	26.8%	0	0.0%	7	3.1%	25	11.0%	71	31.1%	228	100.0%
Suspicious Persons	23	12.9%	71	39.9%	56	31.5%	6	3.4%	8	4.5%	6	3.4%	8	4.5%	178	100.0%
Ambush	0	0.0%	3	20.0%	5	33.3%	3	20.0%	2	13.3%	1	6.7%	1	6.7%	15	100.0%
Mentally Deranged	3	5.8%	14	26.9%	27	51.9%	0	0.0%	1	1.9%	2	3.8%	5	9.6%	52	100.0%
Traffic Pursuits	29	16.9%	68	39.5%	60	34.9%	3	1.7%	6	3.5%	1	0.6%	5	2.9%	172	100.0%
All Other	20	10.2%	63	32.0%	53	26.9%	2	1.0%	20	10.2%	14	7.1%	25	12.7%	197	100.0%
<b>Total</b>	<b>201</b>	<b>10.7%</b>	<b>564</b>	<b>30.0%</b>	<b>761</b>	<b>40.4%</b>	<b>22</b>	<b>1.2%</b>	<b>75</b>	<b>4.0%</b>	<b>78</b>	<b>4.1%</b>	<b>182</b>	<b>9.7%</b>	<b>1,883</b>	<b>100.0%</b>

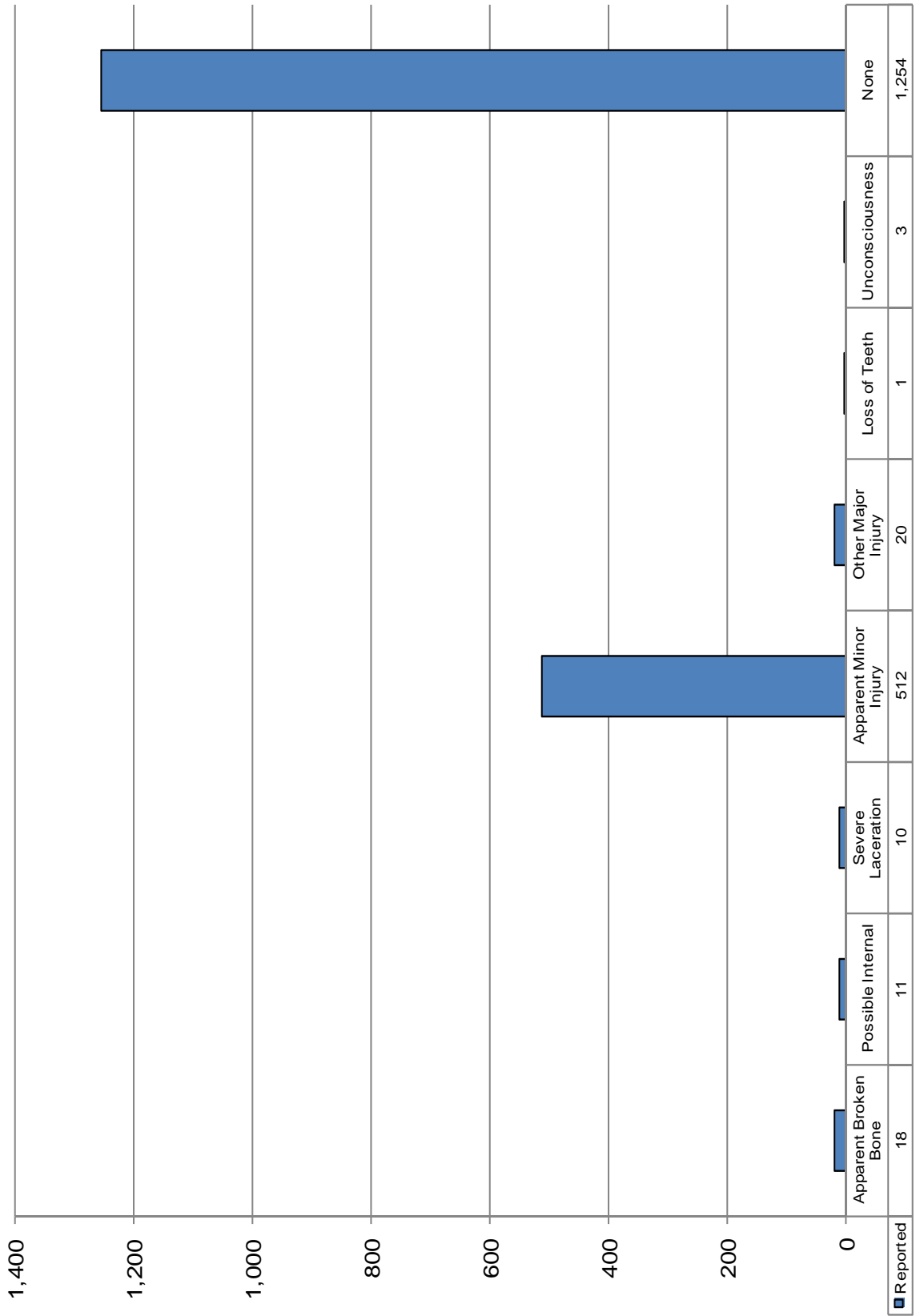


## 2012 LEOKA Activity Type



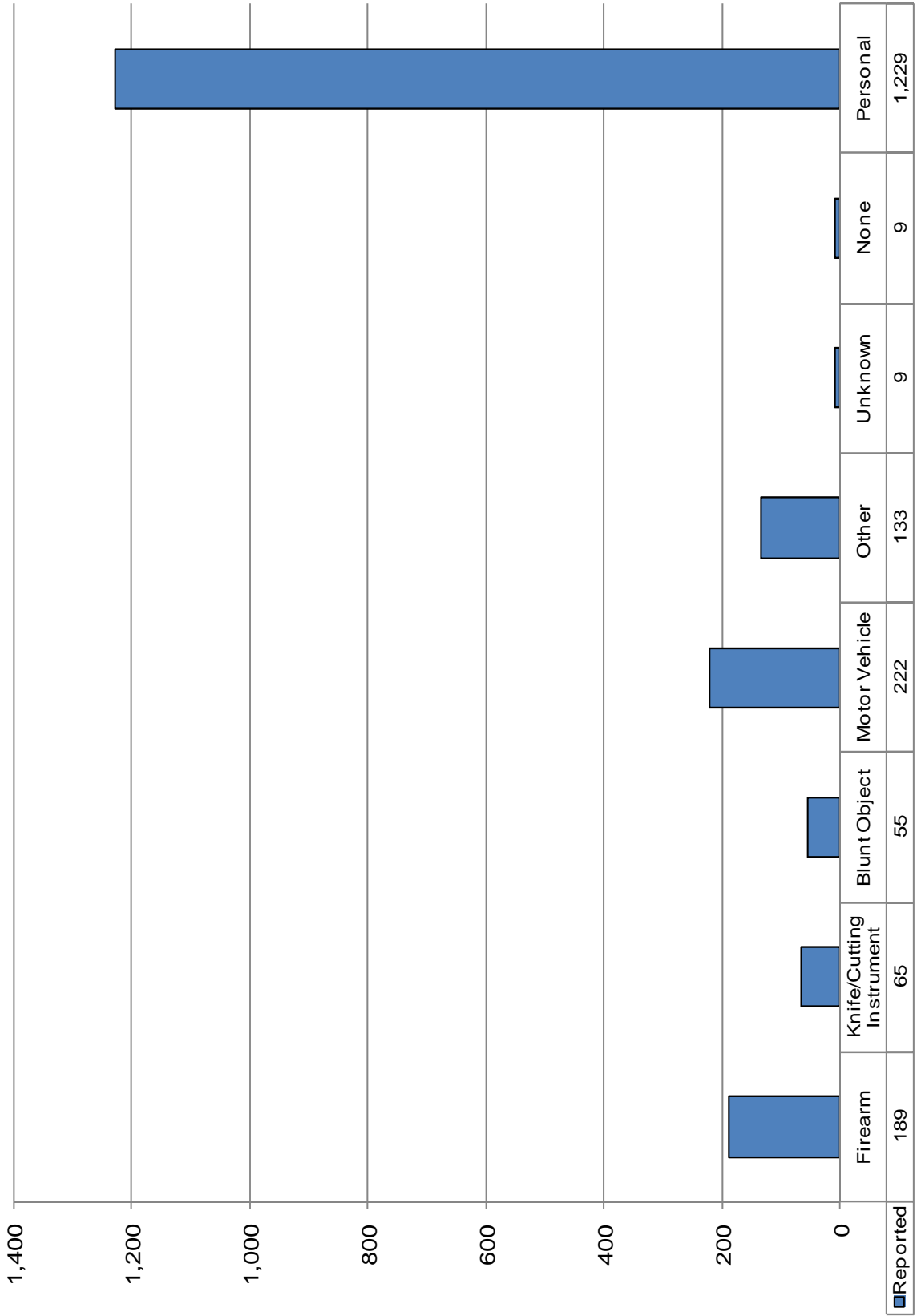


## 2012 LEOKA Injury Type





## 2012 LEOKA Weapon Type



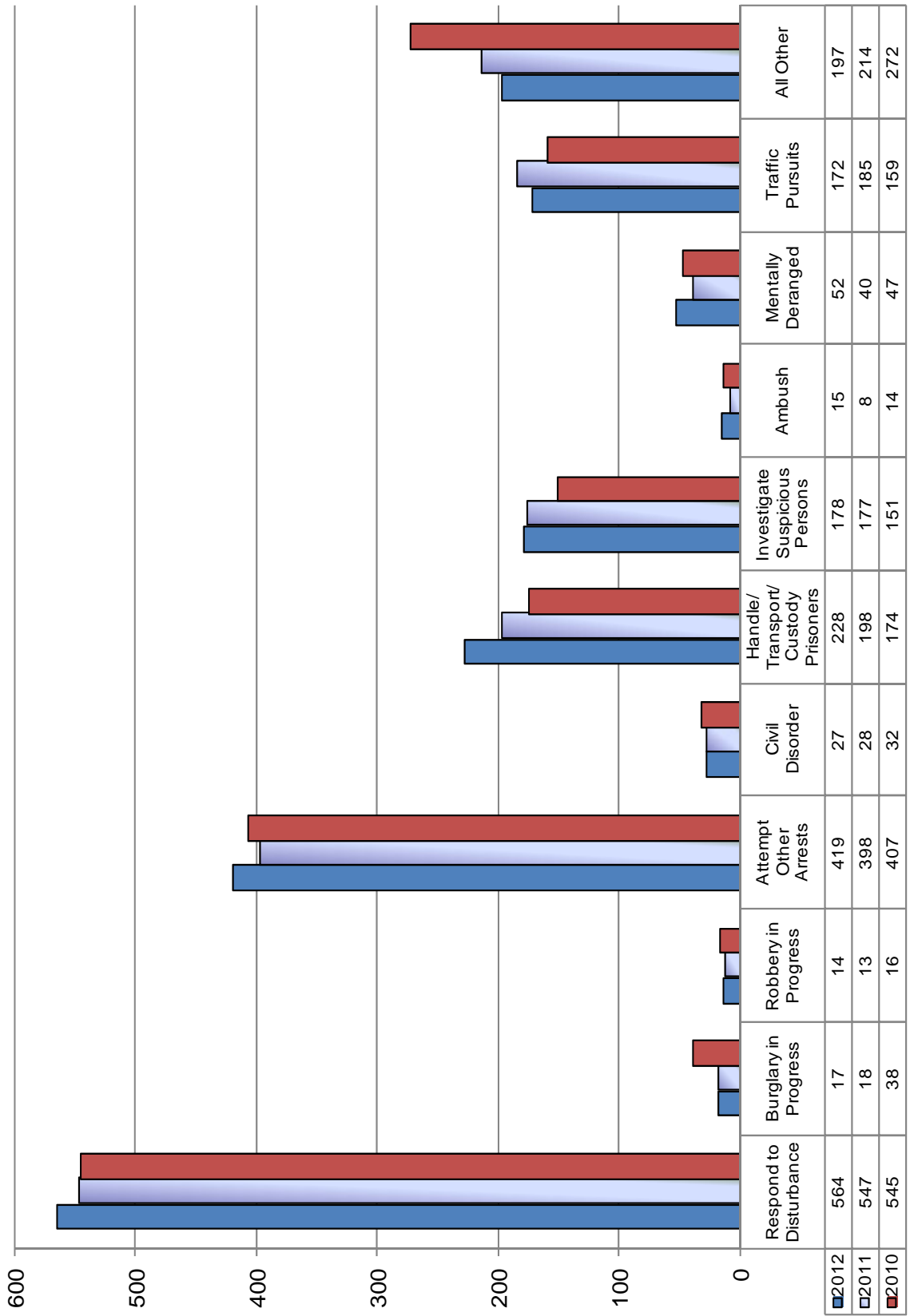


**2012  
LEOKA  
THREE  
YEAR  
TRENDS**



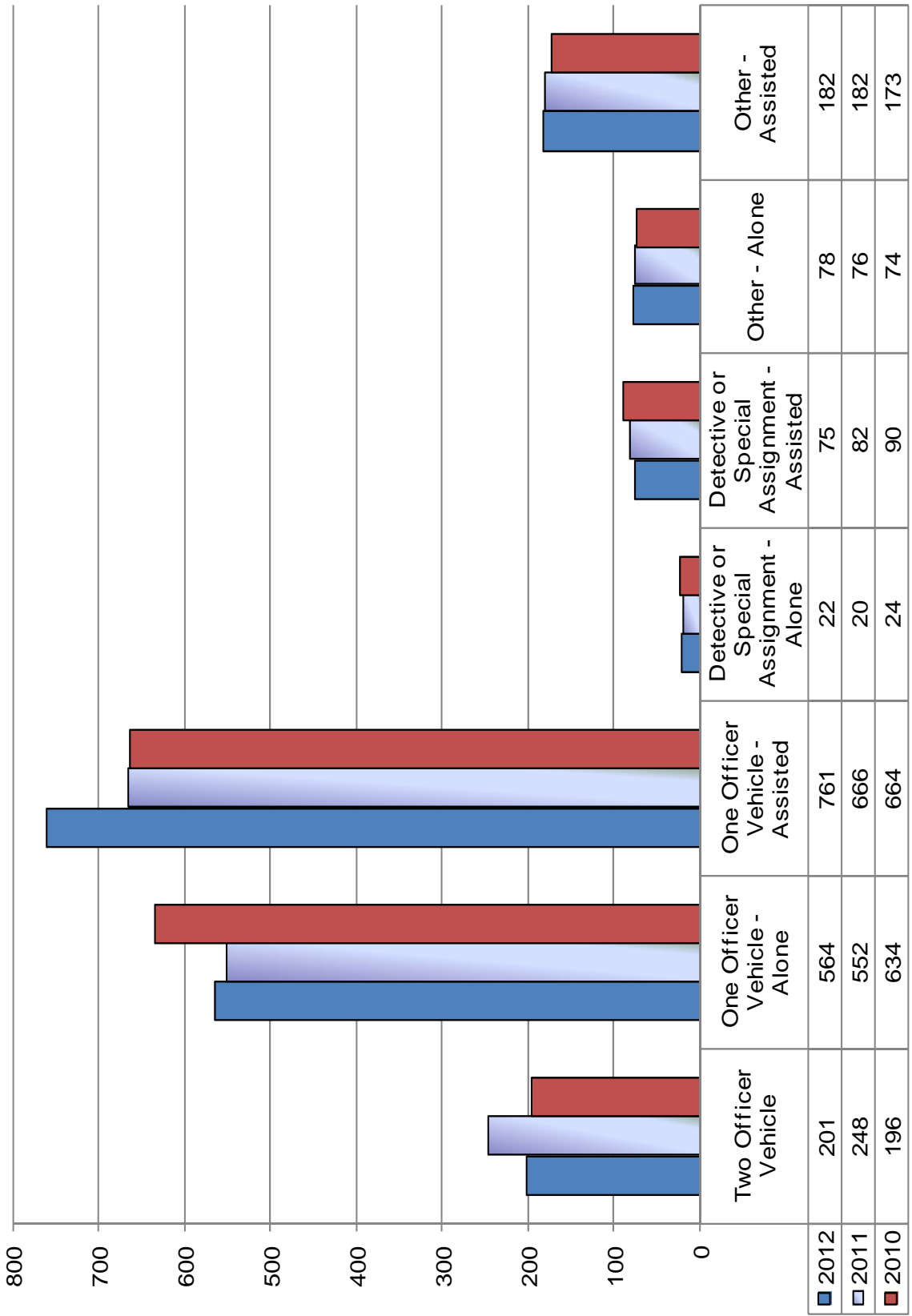


# LEOKA Activity Type



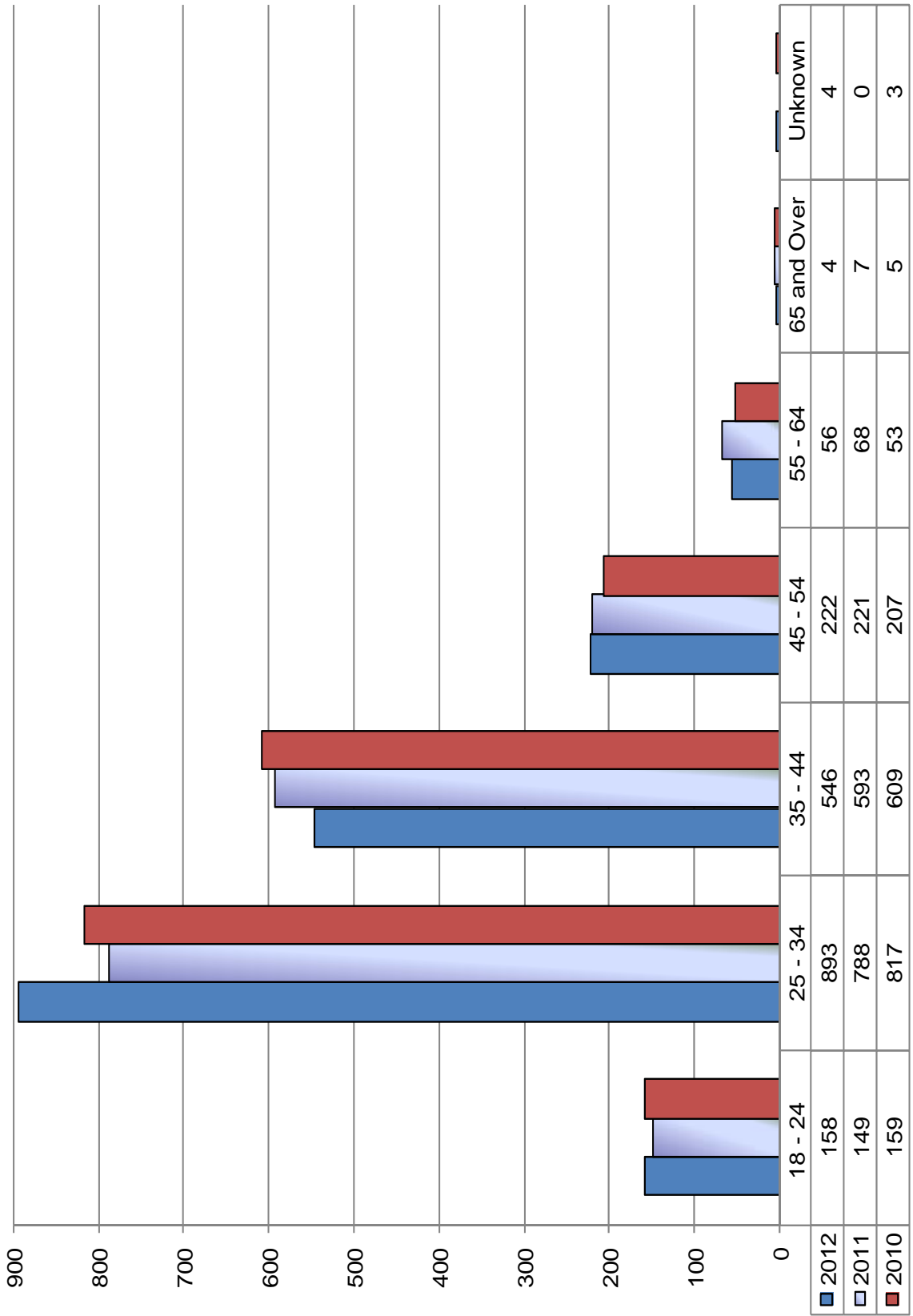


# LEOKA Vehicle Assignment



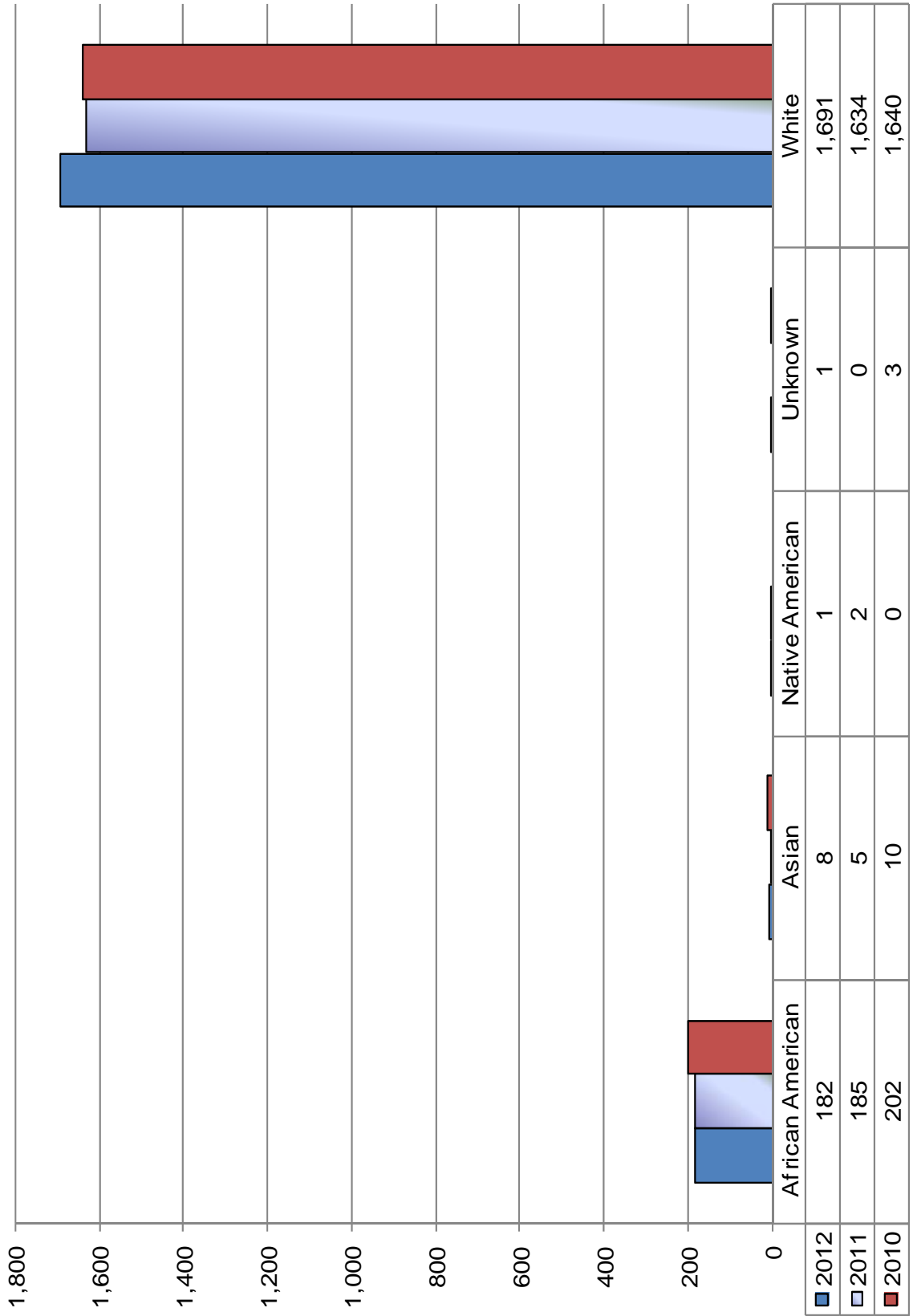


# LEOKA Victims by Age



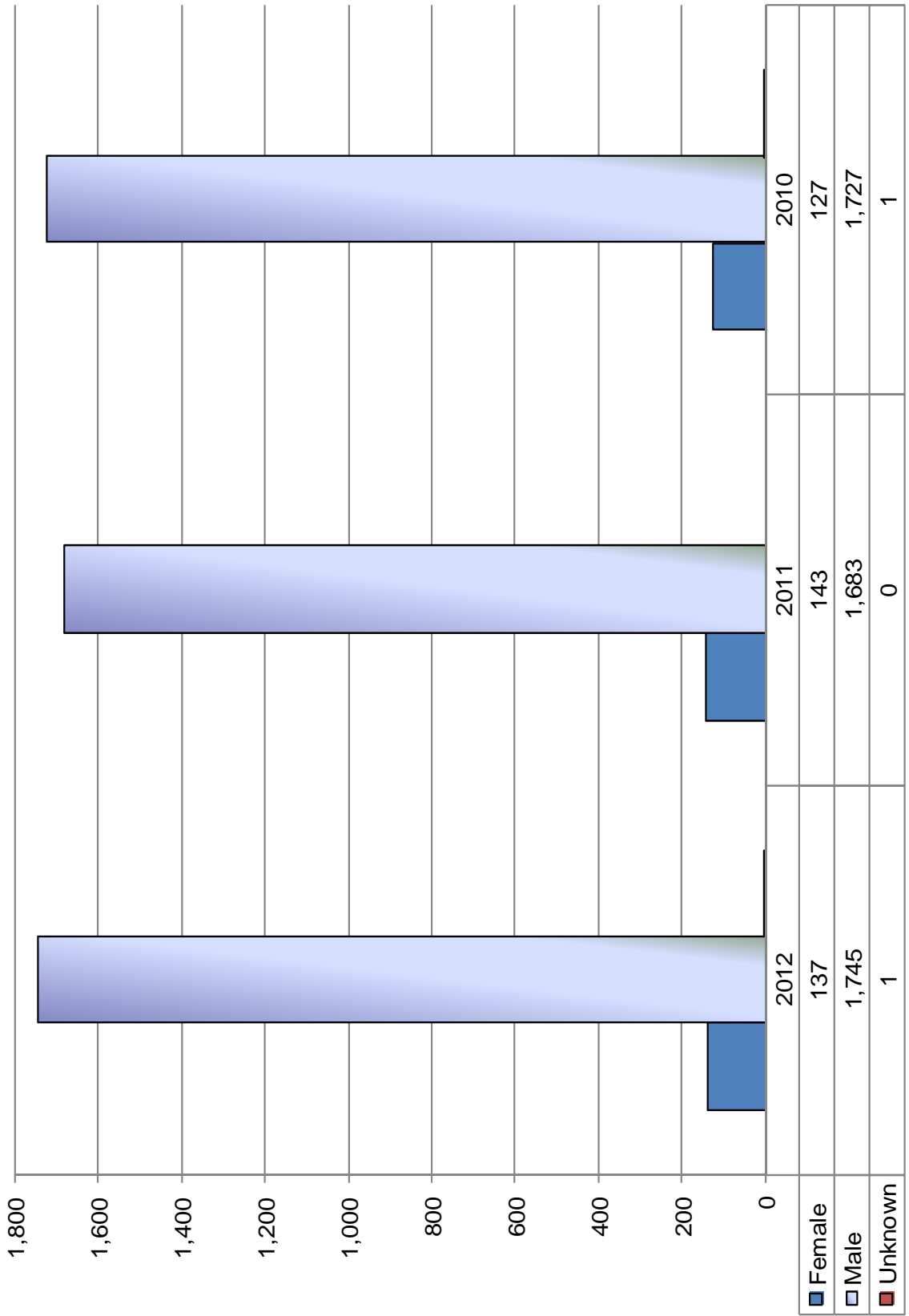


# LEOKA Victims by Race



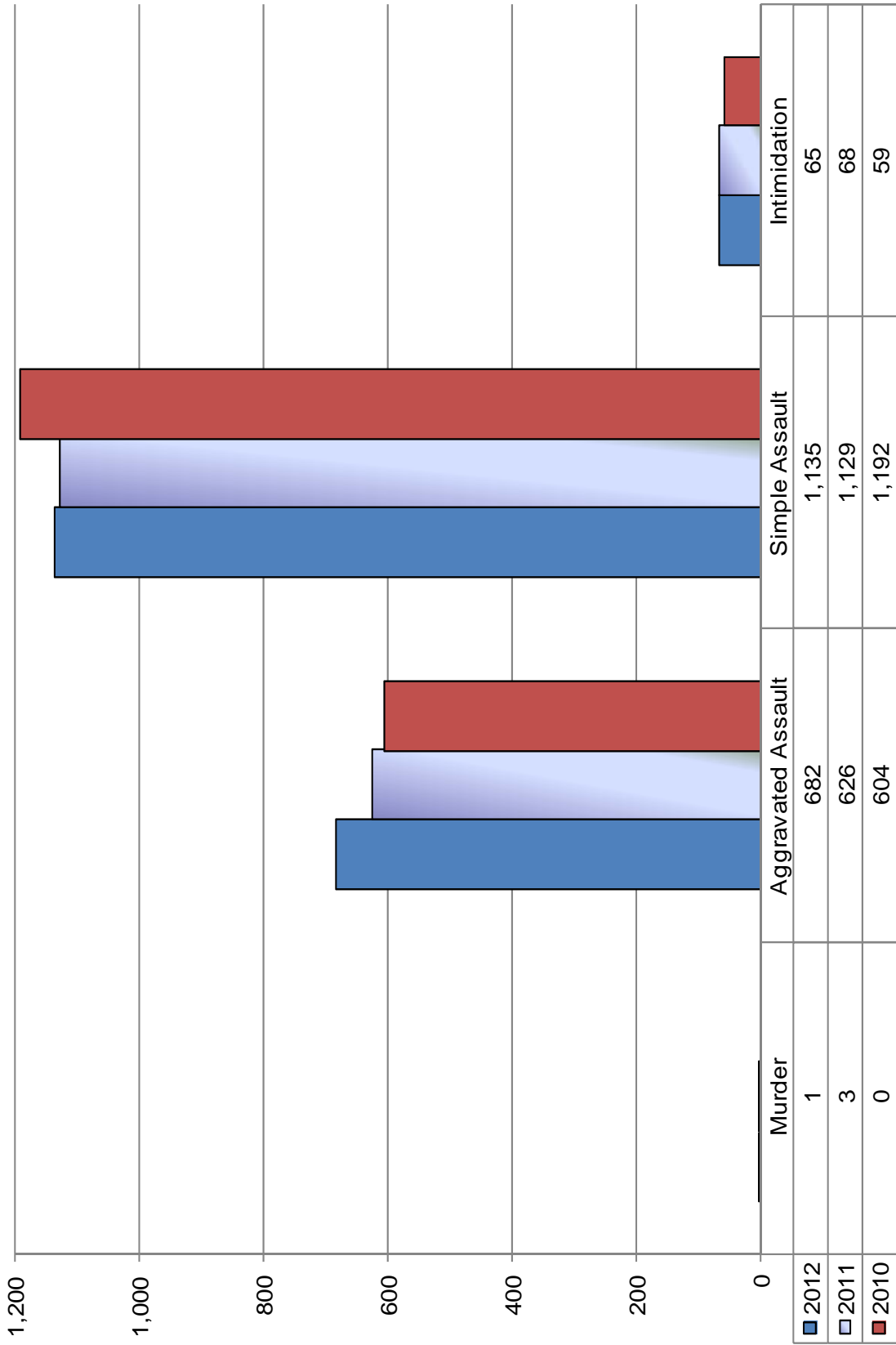


# LEOKA Victims by Gender





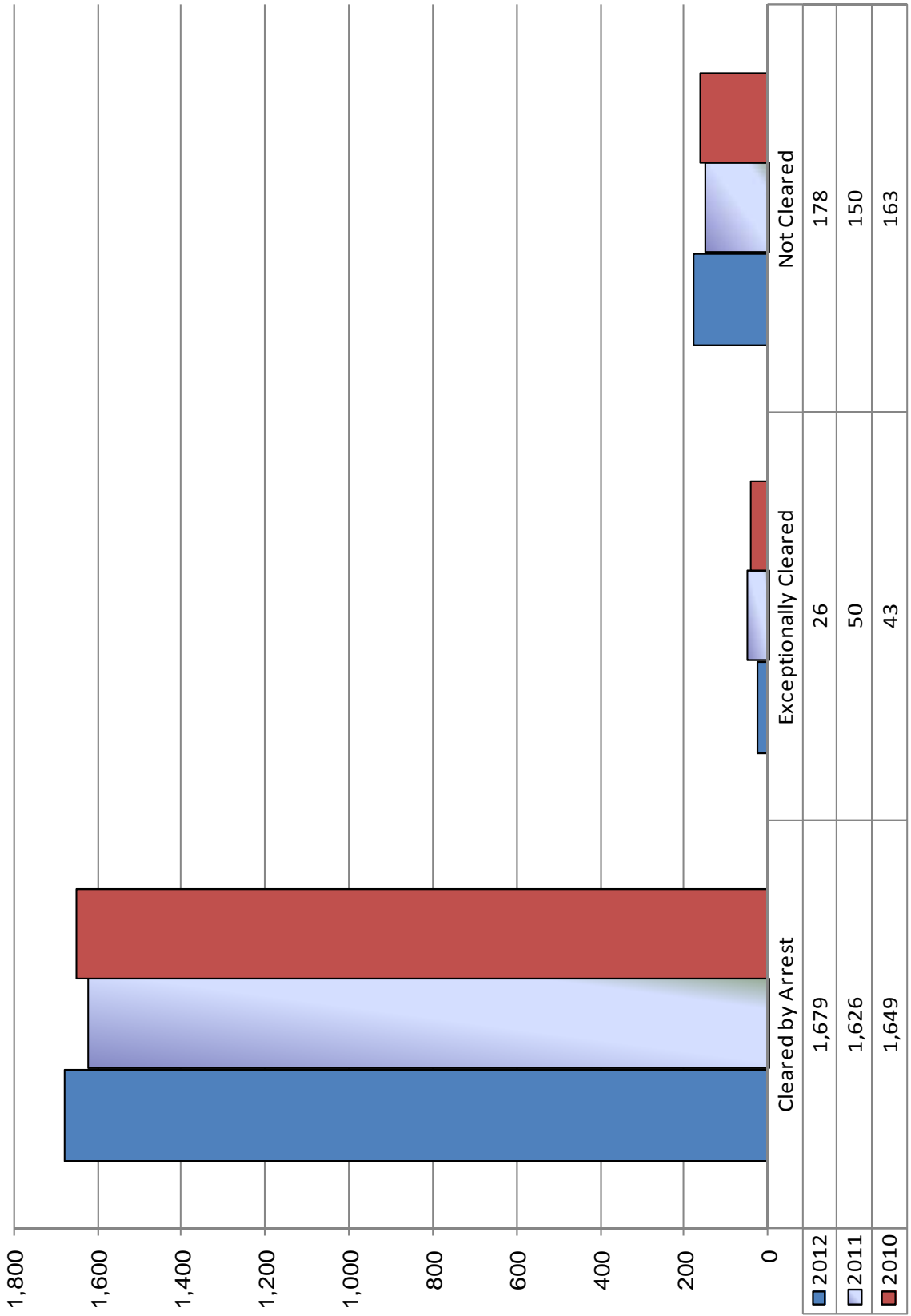
# LEOKA Incidents by TIBRS Offense



Note: There were no (0) reported incidents with the offense of Stalking for the time frame.



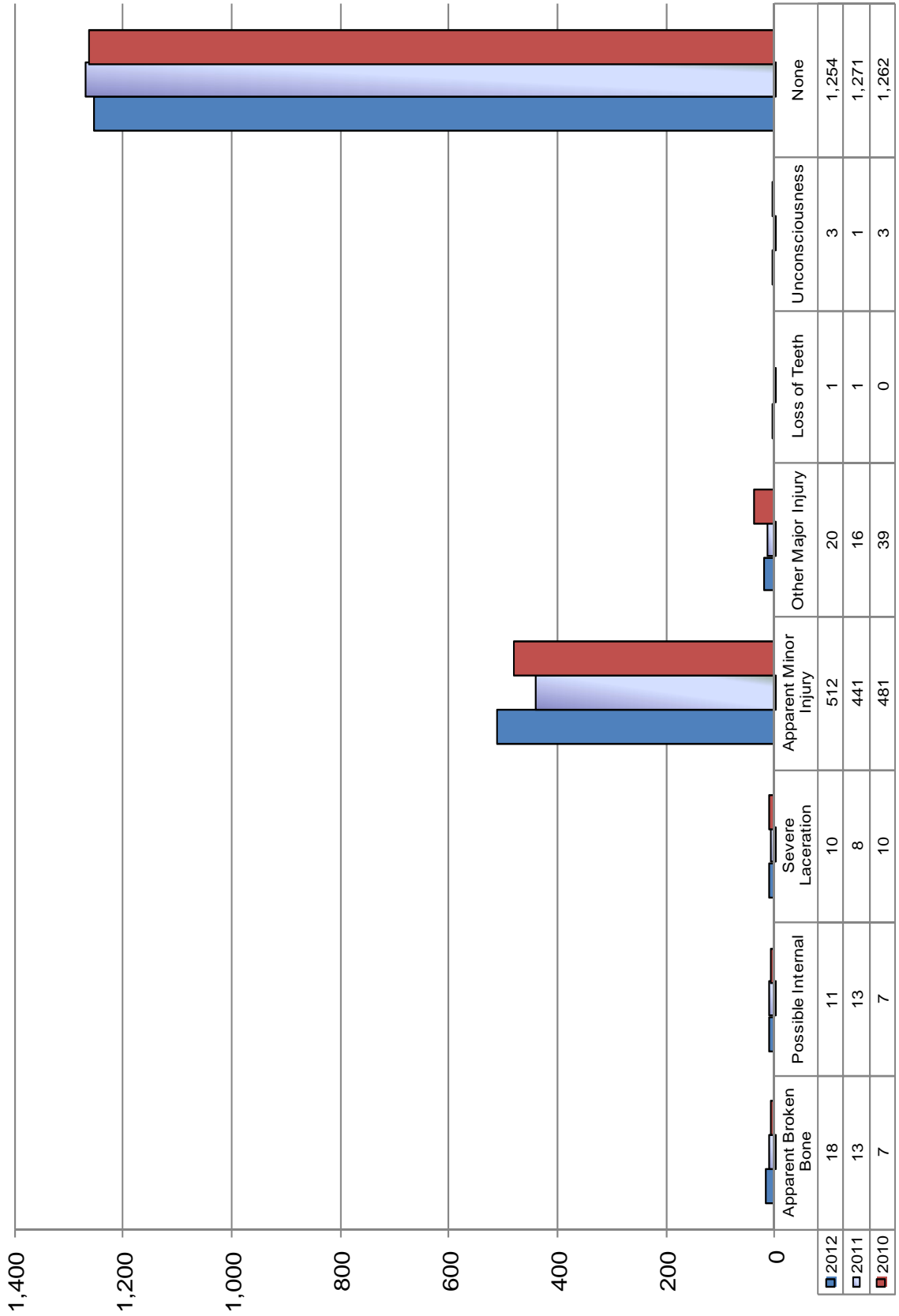
# LEOKA Incidents by Clearance Type





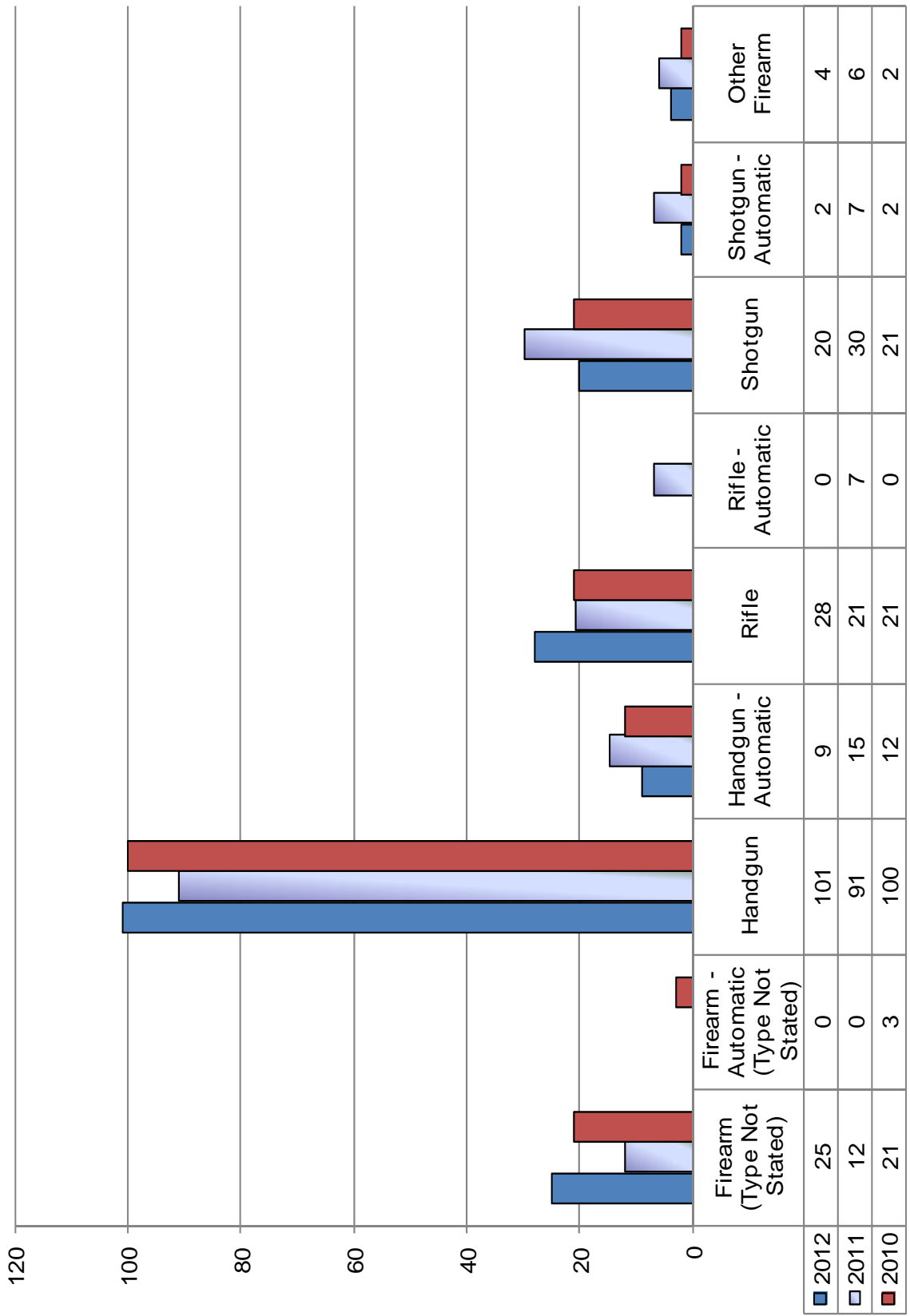


# LEOKA Injury Type



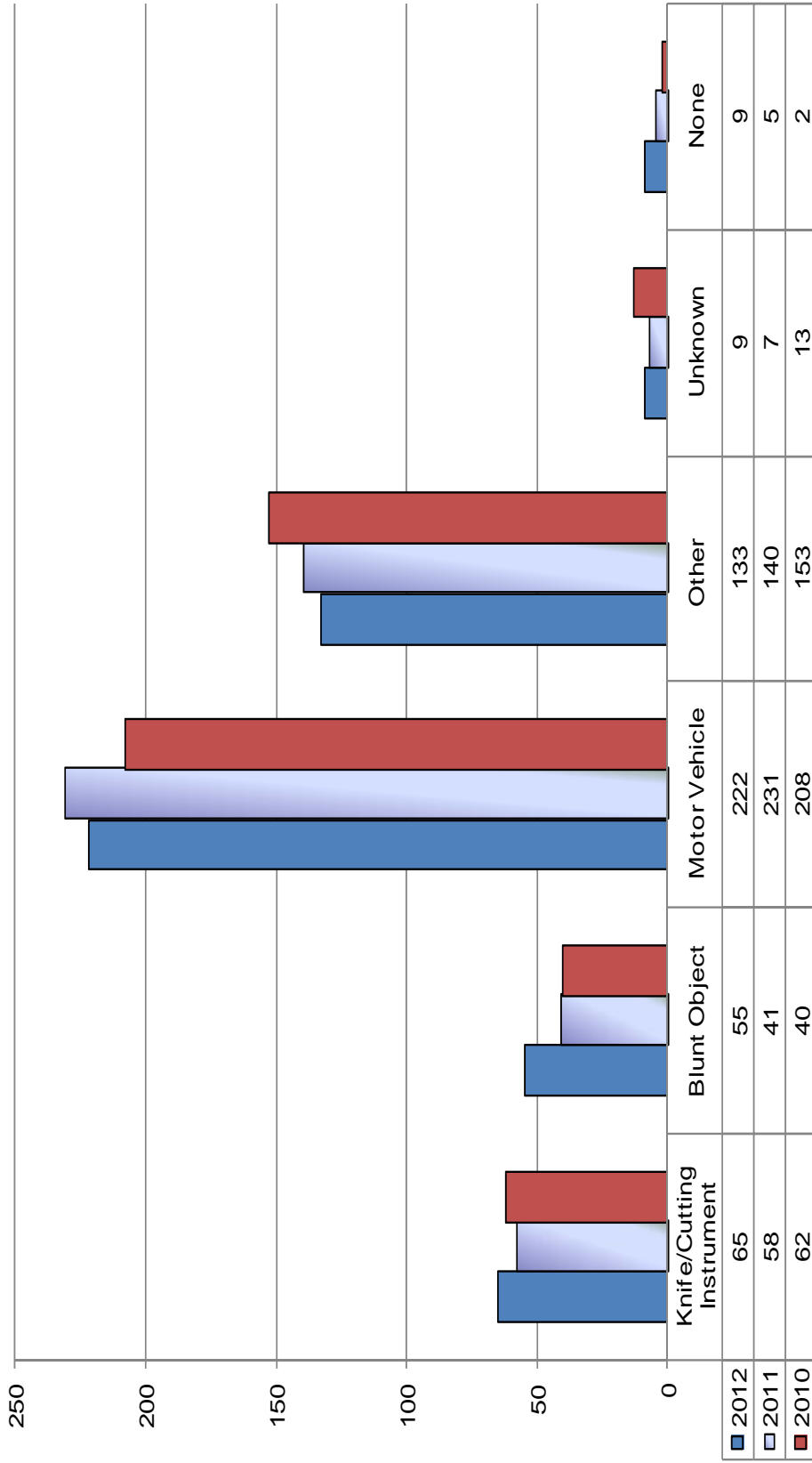


# LEOKA Weapon Type - Firearm



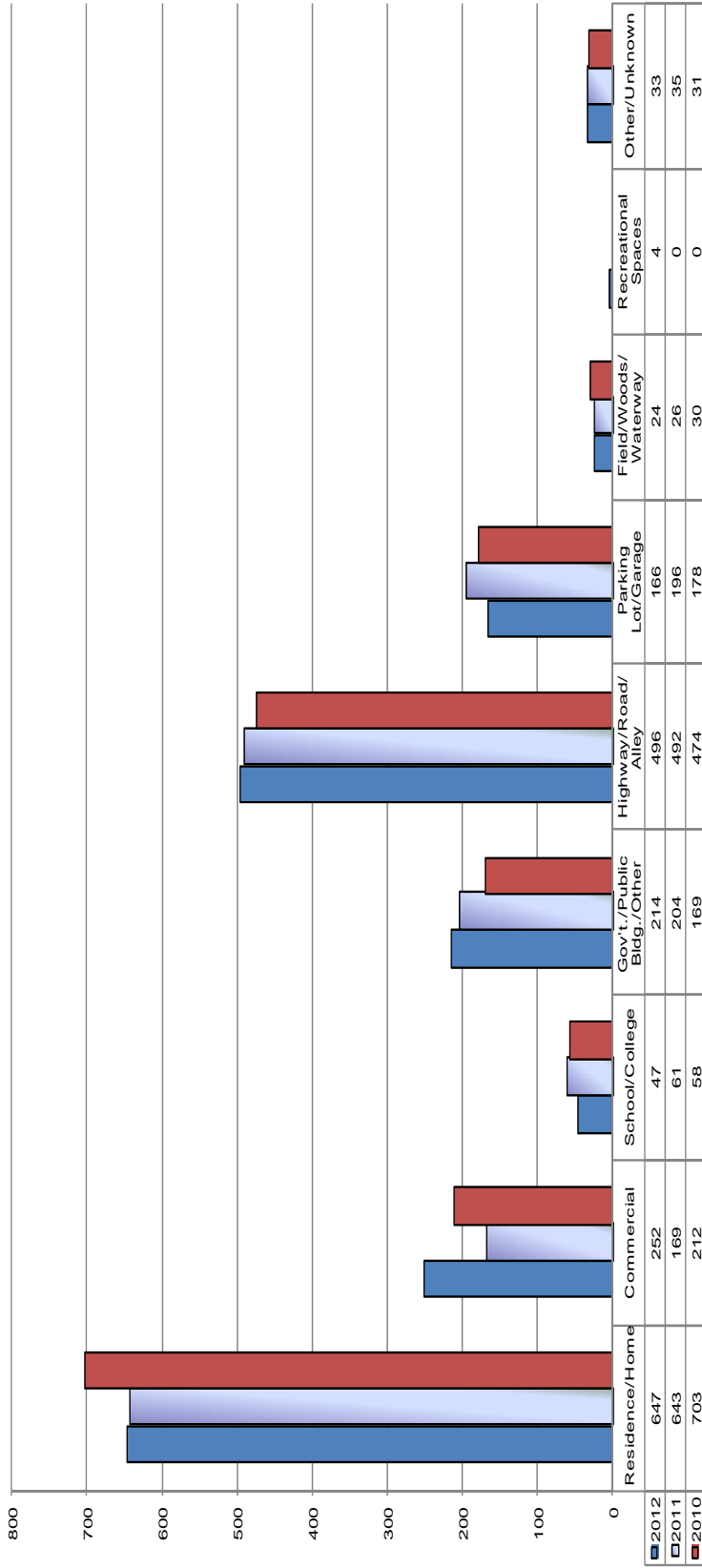


## LEOKA Weapon Type Non Firearm



- Notes:**
1. For comparison purposes, the Weapon Type "Personal Weapons" was excluded from this chart. The numbers reported for this category were: 2012 = 1,229, 2011 = 1,168, and 2010 = 1,209.
  2. The Weapon Type "Other" also includes the following categories: Asphyxiation, Poison, Drugs, Explosives, and Fire/Incendiary Device.
  3. Up to three (3) different Weapon Types can be entered per offense per incident.

# LEOKA Incidents by Location Group



Note: No incidents were reported with the location of Abandoned/Condemned Structure, Construction Site, Industrial Site, Tribal Lands or Transportation.

**Commercial locations include:**

- Bank/Savings & Loan
- Dep't/Discount Store
- Drug Store/Doctor's
- Office/Hospital
- ATM Separate from Bank

**School/College includes:**

- School - College/University
- School - Elementary/Secondary

**Public Buildings / Other locations include:**

- Church/Synagogue/Temple
- Government/Public Buildings
- Shelter - Mission/Homeless
- Community Center
- Jail/Prison
- Military Installation

**Recreational Spaces includes:**

- Amusement Park
- Gambling Facility/Casino
- Arena/Stadium/Fairgrounds/Coliseum
- Park/Playground
- Camp/Campground
- Rest Area

- Convenience Store
- Liquor Store
- Specialty Store (T.V./ur,etc)

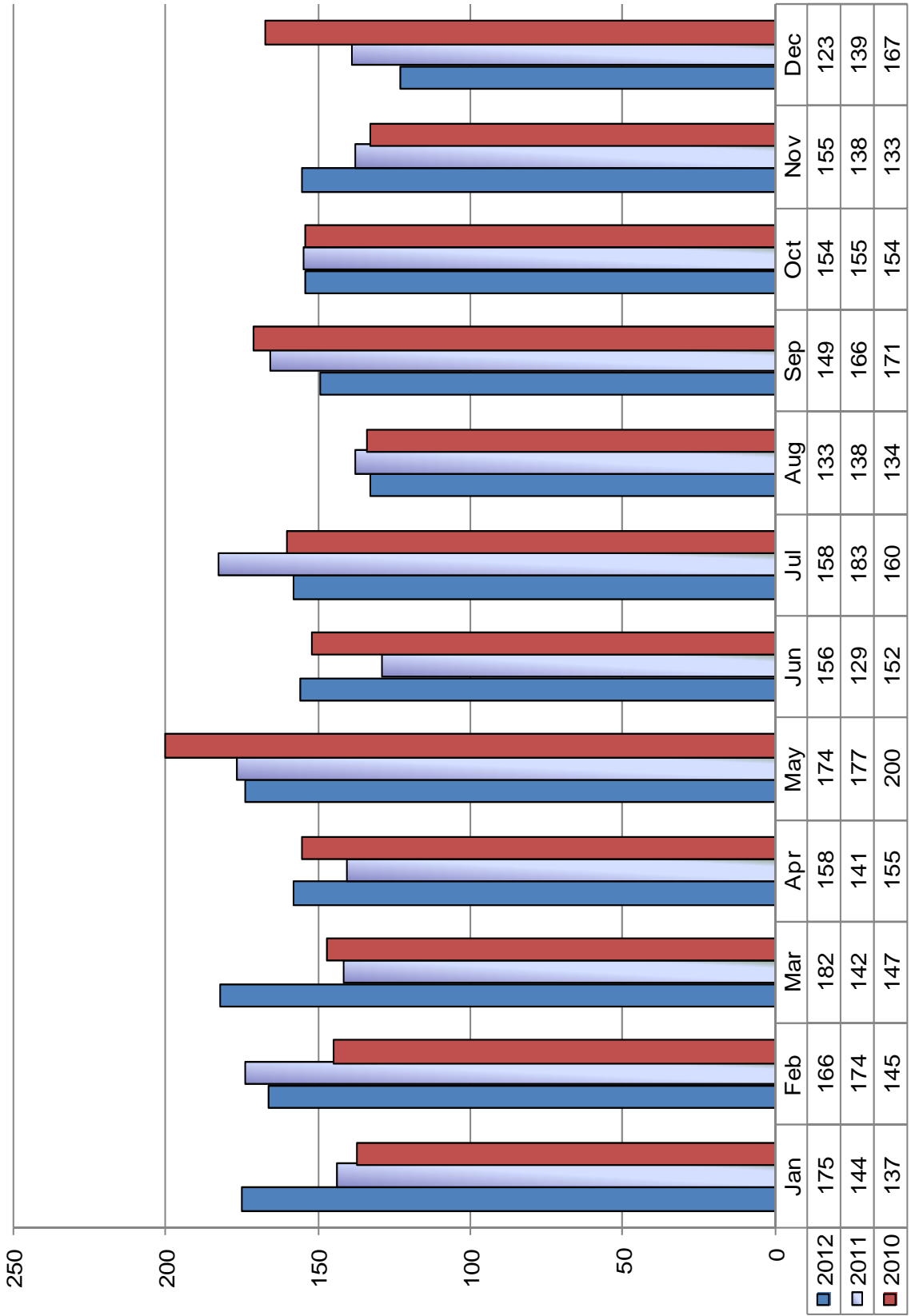
- Commercial/Office Bldg.
- Hotel/Motel/Etc.
- Services/Gas Station

- Bar/Night Club
- Grocery/Supermarket
- Restaurant
- Shopping Mall



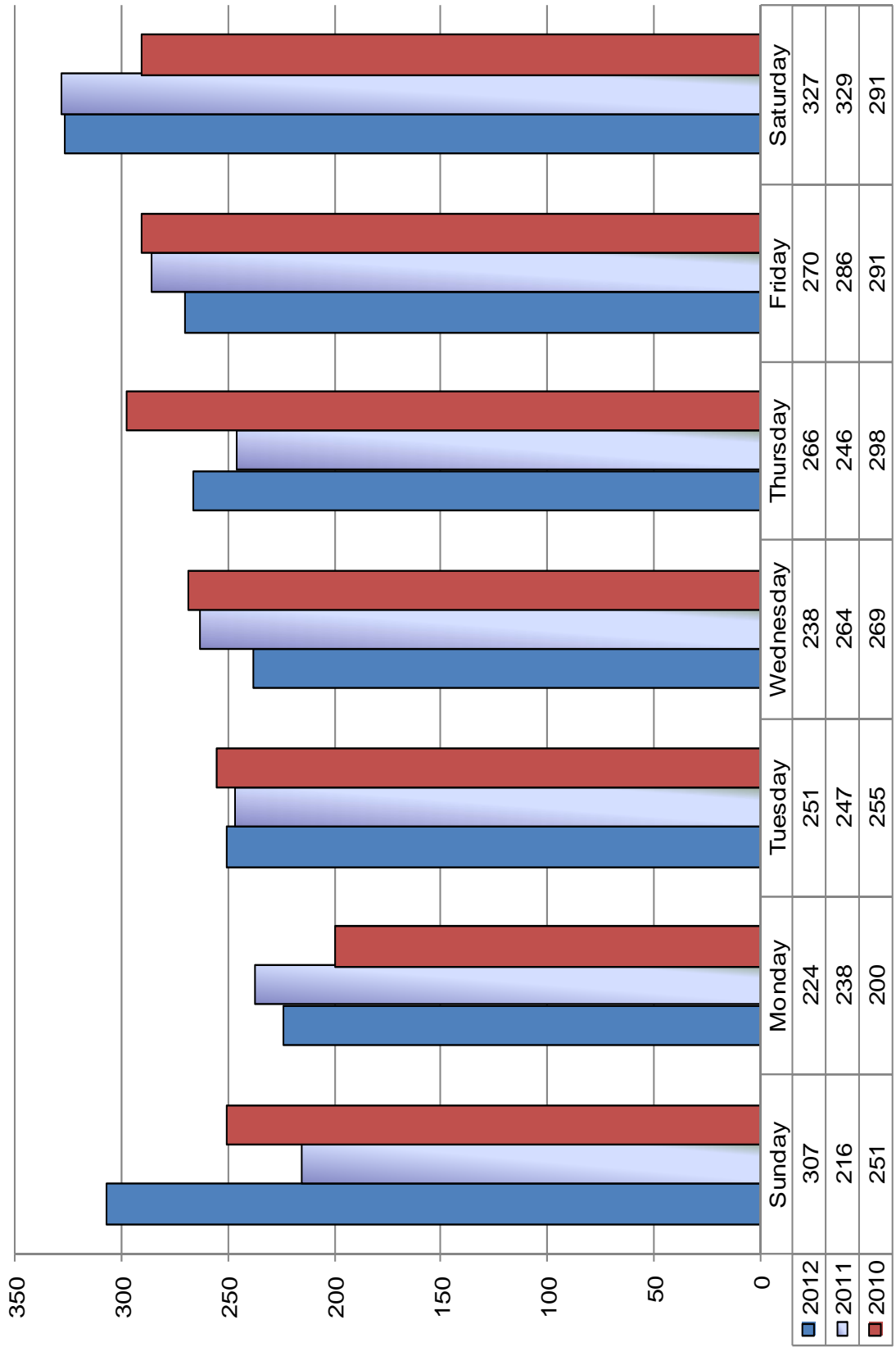


# LEOKA by Month



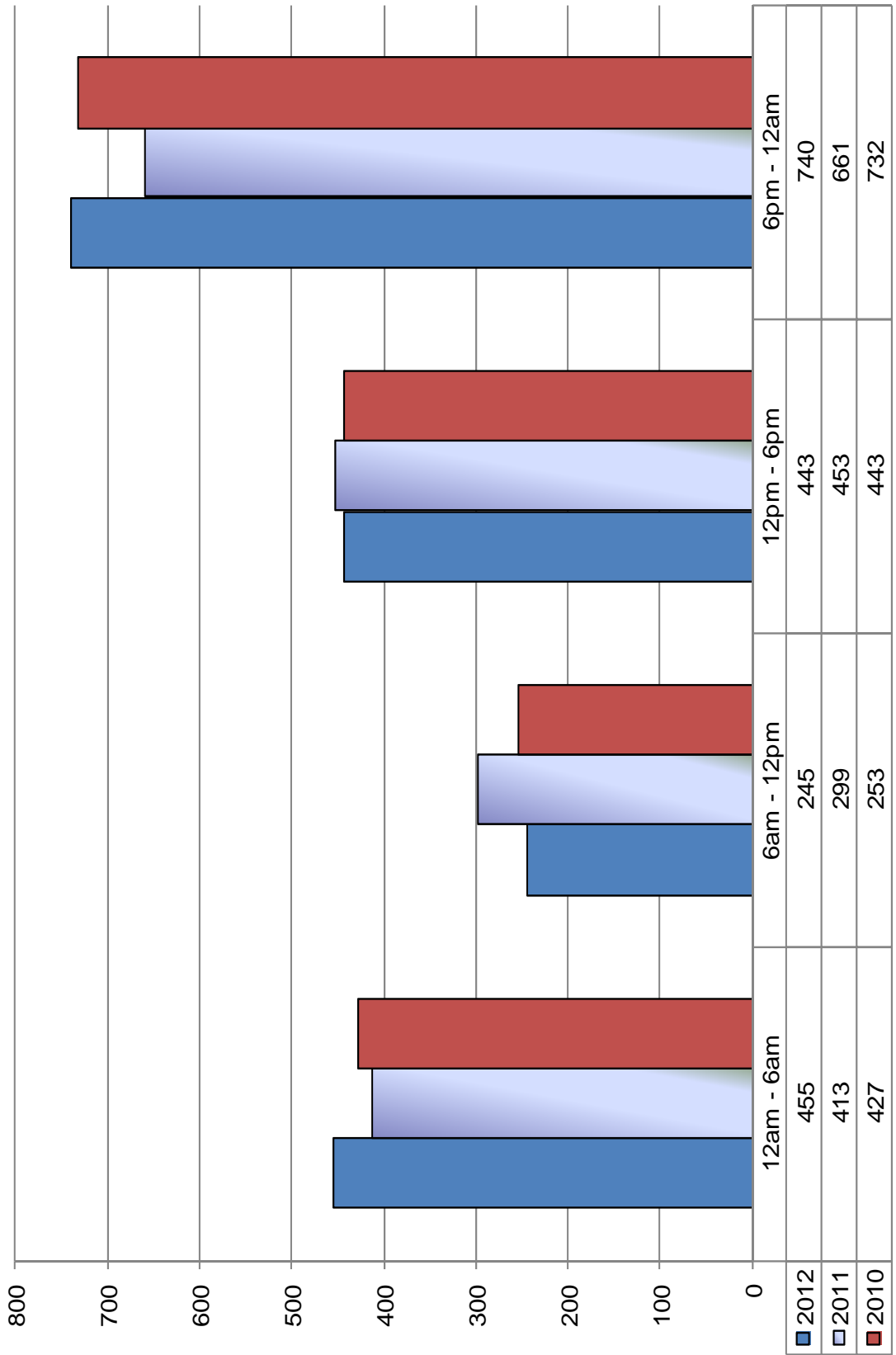


## LEOKA Incidents by Day of Week



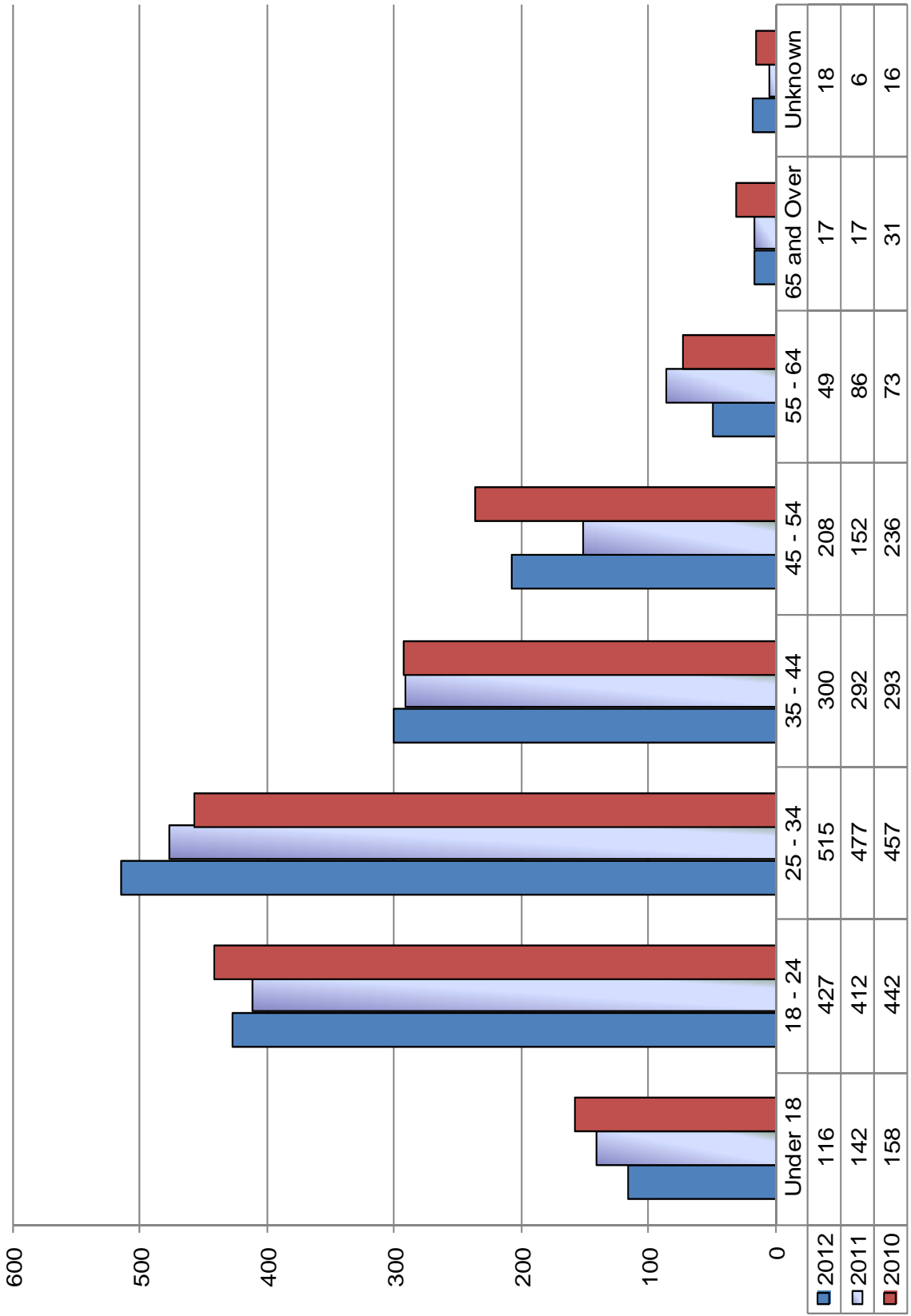


## LEOKA Incidents by Time of Day





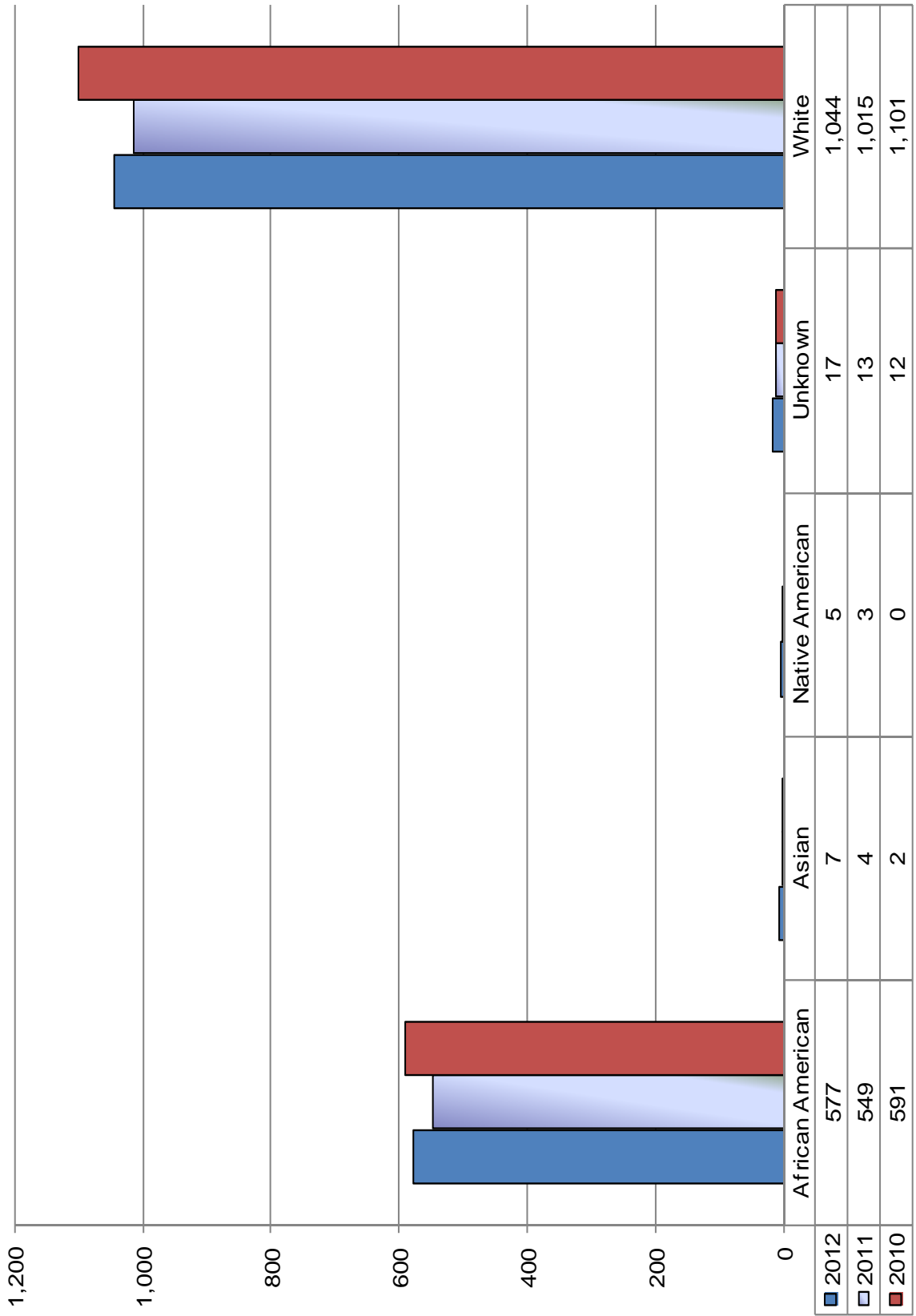
# Offenders by Age





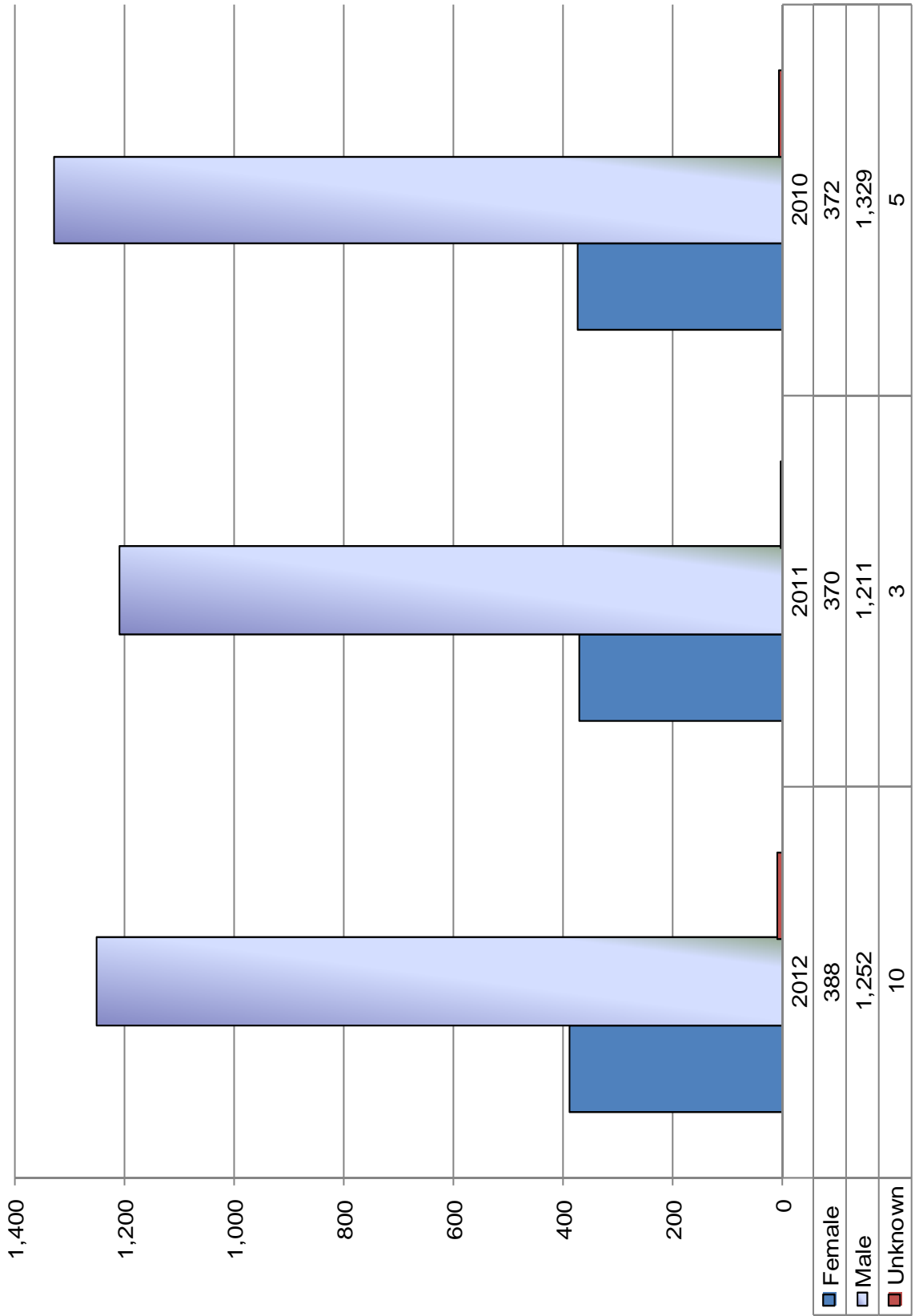


# Offenders by Race





## Offenders by Gender



**2012  
LEOKA ACTIVITY  
TYPE  
BY  
AGENCY**



<b>LEOKA Activity Type</b>						
<b>Agency Name</b>	<b>Responding to Disturbance</b>	<b>Burglary in Progress or Pursuit</b>	<b>Robbery in Progress or Pursuit</b>	<b>Attempting Other Arrests</b>	<b>Civil Disorder</b>	<b>Handling/Transporting/Custody of Prisoners</b>
<b>Statewide Total</b>	<b>564</b>	<b>17</b>	<b>14</b>	<b>419</b>	<b>27</b>	<b>228</b>
Anderson County Sheriff's Office	3	0	0	0	1	3
Bedford County Sheriff's Office	0	0	0	0	0	0
Benton County Sheriff's Office	1	0	0	4	0	3
Bledsoe County Sheriff's Office	0	0	0	0	0	0
Blount County Sheriff's Office	0	0	0	4	0	3
Bradley County Sheriff's Office	12	0	0	4	0	1
Cannon County Sheriff's Office	1	0	0	0	0	0
Carroll County Sheriff's Office	0	0	0	1	0	0
Carter County Sheriff's Office	0	0	0	1	0	0
Cheatham County Sheriff's Office	1	0	0	2	0	0
Chester County Sheriff's Office	3	0	0	0	0	0
Claiborne County Sheriff's Office	0	0	0	0	0	0
Cocke County Sheriff's Office	2	1	0	0	0	0
Coffee County Sheriff's Office	1	0	0	0	0	1
Crockett County Sheriff's Office	2	0	0	0	0	0



<b>LEOKA Activity Type</b>						
<b>Agency Name</b>	Investigating Suspicious Person/Circumstances	Ambush No Warning	Mentally Deranged	Traffic Pursuits/Stops	All Other	Total
<b>Statewide Total</b>	<b>178</b>	<b>15</b>	<b>52</b>	<b>172</b>	<b>197</b>	<b>1,883</b>
Anderson County Sheriff's Office	0	0	0	2	2	11
Bedford County Sheriff's Office	0	0	1	0	1	2
Benton County Sheriff's Office	0	0	0	0	0	8
Bledsoe County Sheriff's Office	0	0	0	1	0	1
Blount County Sheriff's Office	0	0	0	1	0	8
Bradley County Sheriff's Office	0	0	0	4	1	22
Cannon County Sheriff's Office	0	0	1	0	0	2
Carroll County Sheriff's Office	1	0	0	1	0	3
Carter County Sheriff's Office	1	0	0	0	2	4
Cheatham County Sheriff's Office	0	0	2	1	0	6
Chester County Sheriff's Office	0	0	0	0	1	4
Claiborne County Sheriff's Office	0	0	0	2	0	2
Cocke County Sheriff's Office	2	0	0	0	1	6
Coffee County Sheriff's Office	0	0	0	0	0	2
Crockett County Sheriff's Office	0	0	0	0	0	2



<b>LEOKA Activity Type</b>						
<b>Agency Name</b>	<b>Responding to Disturbance</b>	<b>Burglary in Progress or Pursuit</b>	<b>Robbery in Progress or Pursuit</b>	<b>Attempting Other Arrests</b>	<b>Civil Disorder</b>	<b>Handling/Transporting/Custody of Prisoners</b>
Cumberland County Sheriff's Office	7	1	0	1	0	0
Decatur County Sheriff's Office	2	0	0	0	0	3
DeKalb County Sheriff's Office	0	0	0	0	0	1
Dickson County Sheriff's Office	3	0	0	0	1	0
Fayette County Sheriff's Office	4	0	0	1	0	1
Fentress County Sheriff's Office	5	0	0	0	0	6
Franklin County Sheriff's Office	1	0	0	1	1	1
Gibson County Sheriff's Office	1	0	0	0	0	1
Grainger County Sheriff's Office	0	0	0	0	0	0
Greene County Sheriff's Office	1	0	0	0	0	0
Grundy County Sheriff's Office	5	0	0	4	0	2
Hamblen County Sheriff's Office	0	0	0	0	0	8
Hamilton County Sheriff's Office	10	0	0	2	0	14
Hancock County Sheriff's Office	0	0	0	4	0	0
Hardeman County Sheriff's Office	5	0	0	1	0	0
Hardin County Sheriff's Office	2	0	0	2	0	2



<b>LEOKA Activity Type</b>						
<b>Agency Name</b>	Investigating Suspicious Person/Circumstances	Ambush No Warning	Mentally Deranged	Traffic Pursuits/Stops	All Other	Total
Cumberland County Sheriff's Office	1	0	0	0	1	11
Decatur County Sheriff's Office	0	0	0	0	0	5
DeKalb County Sheriff's Office	0	0	0	0	0	1
Dickson County Sheriff's Office	1	0	0	1	1	7
Fayette County Sheriff's Office	0	0	0	1	0	7
Fentress County Sheriff's Office	0	0	0	0	0	11
Franklin County Sheriff's Office	1	0	0	0	1	6
Gibson County Sheriff's Office	0	0	0	0	0	2
Grainger County Sheriff's Office	0	0	1	0	2	3
Greene County Sheriff's Office	0	0	0	0	0	1
Grundy County Sheriff's Office	0	1	0	0	2	14
Hamblen County Sheriff's Office	0	0	0	1	0	9
Hamilton County Sheriff's Office	8	0	2	3	5	44
Hancock County Sheriff's Office	0	0	0	0	0	4
Hardeman County Sheriff's Office	0	0	0	0	0	6
Hardin County Sheriff's Office	0	0	0	1	0	7



<b>LEOKA Activity Type</b>						
<b>Agency Name</b>	<b>Responding to Disturbance</b>	<b>Burglary in Progress or Pursuit</b>	<b>Robbery in Progress or Pursuit</b>	<b>Attempting Other Arrests</b>	<b>Civil Disorder</b>	<b>Handling/Transporting/Custody of Prisoners</b>
Hawkins County Sheriff's Office	0	0	0	2	0	0
Haywood County Sheriff's Office	0	0	0	0	0	0
Henderson County Sheriff's Office	1	0	0	0	0	0
Henry County Sheriff's Office	1	0	0	0	0	3
Hickman County Sheriff's Office	0	0	0	0	0	1
Humphreys County Sheriff's Office	0	0	0	0	0	1
Jefferson County Sheriff's Office	3	1	0	2	0	0
Johnson County Sheriff's Office	0	0	0	1	0	0
Knox County Sheriff's Office	6	0	0	14	0	7
Lake County Sheriff's Office	0	0	0	1	0	1
Lauderdale County Sheriff's Office	3	0	0	0	0	4
Lawrence County Sheriff's Office	10	1	0	3	0	14
Lewis County Sheriff's Office	0	0	0	0	1	1
Lincoln County Sheriff's Office	1	0	0	0	0	0
Loudon County Sheriff's Office	0	0	0	0	0	2
Macon County Sheriff's Office	2	0	0	2	0	1





<b>LEOKA Activity Type</b>						
<b>Agency Name</b>	Investigating Suspicious Person/Circumstances	Ambush No Warning	Mentally Deranged	Traffic Pursuits/Stops	All Other	Total
Hawkins County Sheriff's Office	0	0	0	0	0	2
Haywood County Sheriff's Office	0	0	0	0	1	1
Henderson County Sheriff's Office	0	0	0	0	0	1
Henry County Sheriff's Office	0	0	0	0	0	4
Hickman County Sheriff's Office	1	0	0	0	1	3
Humphreys County Sheriff's Office	0	0	0	0	0	1
Jefferson County Sheriff's Office	1	0	0	0	0	7
Johnson County Sheriff's Office	1	0	0	0	2	4
Knox County Sheriff's Office	0	0	1	1	6	35
Lake County Sheriff's Office	0	0	0	0	0	2
Lauderdale County Sheriff's Office	2	0	0	1	0	10
Lawrence County Sheriff's Office	0	0	0	1	2	31
Lewis County Sheriff's Office	0	0	0	0	0	2
Lincoln County Sheriff's Office	0	0	0	0	1	2
Loudon County Sheriff's Office	0	0	0	0	0	2
Macon County Sheriff's Office	0	0	0	0	0	5



<b>LEOKA Activity Type</b>						
<b>Agency Name</b>	<b>Responding to Disturbance</b>	<b>Burglary in Progress or Pursuit</b>	<b>Robbery in Progress or Pursuit</b>	<b>Attempting Other Arrests</b>	<b>Civil Disorder</b>	<b>Handling/Transporting/Custody of Prisoners</b>
Madison County Sheriff's Office	1	0	0	4	1	1
Marion County Sheriff's Office	0	0	0	0	0	1
Marshall County Sheriff's Office	0	0	0	5	0	0
Maury County Sheriff's Office	2	0	0	2	5	0
McMinn County Sheriff's Office	0	0	0	0	0	0
McNairy County Sheriff's Office	3	0	0	5	0	3
Meigs County Sheriff's Office	1	0	0	0	0	0
Metro Hartsville/Trousdale County Sheriff's Office	2	0	0	1	0	0
Monroe County Sheriff's Office	1	0	0	0	0	0
Montgomery County Sheriff's Office	1	0	0	0	0	1
Morgan County Sheriff's Office	10	0	0	0	0	0
Obion County Sheriff's Office	1	0	0	0	0	0
Overton County Sheriff's Office	1	0	0	3	0	0
Polk County Sheriff's Office	2	0	0	2	0	0
Putnam County Sheriff's Office	1	0	0	0	0	0
Rhea County Sheriff's Office	1	1	0	0	0	3



<b>LEOKA Activity Type</b>						
<b>Agency Name</b>	Investigating Suspicious Person/Circumstances	Ambush No Warning	Mentally Deranged	Traffic Pursuits/Stops	All Other	Total
Madison County Sheriff's Office	2	0	1	2	3	15
Marion County Sheriff's Office	0	0	0	0	0	1
Marshall County Sheriff's Office	0	0	0	0	0	5
Maury County Sheriff's Office	0	0	1	0	1	11
McMinn County Sheriff's Office	0	0	0	0	1	1
McNairy County Sheriff's Office	1	0	0	0	0	12
Meigs County Sheriff's Office	1	0	0	1	1	4
Metro Hartsville/Trousdale County Sheriff's Office	0	0	0	0	0	3
Monroe County Sheriff's Office	0	0	0	2	0	3
Montgomery County Sheriff's Office	0	0	0	3	1	6
Morgan County Sheriff's Office	0	0	0	1	0	11
Obion County Sheriff's Office	0	0	0	0	0	1
Overton County Sheriff's Office	1	0	0	0	0	5
Polk County Sheriff's Office	0	0	1	1	0	6
Putnam County Sheriff's Office	0	0	0	0	0	1
Rhea County Sheriff's Office	0	0	2	0	1	8



<b>LEOKA Activity Type</b>						
<b>Agency Name</b>	<b>Responding to Disturbance</b>	<b>Burglary in Progress or Pursuit</b>	<b>Robbery in Progress or Pursuit</b>	<b>Attempting Other Arrests</b>	<b>Civil Disorder</b>	<b>Handling/Transporting/Custody of Prisoners</b>
Roane County Sheriff's Office	0	0	0	0	0	2
Robertson County Sheriff's Office	0	0	0	0	0	0
Rutherford County Sheriff's Office	4	0	0	2	0	3
Scott County Sheriff's Office	0	0	0	0	0	0
Sequatchie County Sheriff's Office	0	0	0	0	0	0
Sevier County Sheriff's Office	1	0	0	1	0	0
Shelby County Sheriff's Office	9	0	0	21	1	3
Smith County Sheriff's Office	0	0	0	0	0	2
Stewart County Sheriff's Office	0	0	0	1	0	1
Sullivan County Sheriff's Office	20	0	0	0	0	2
Sumner County Sheriff's Office	0	0	0	1	0	1
Tipton County Sheriff's Office	8	0	0	4	0	0
Unicoi County Sheriff's Office	0	0	0	0	0	0
Union County Sheriff's Office	2	0	0	0	0	0
Warren County Sheriff's Office	4	0	0	2	1	0
Washington County Sheriff's Office	5	0	0	8	0	3



<b>LEOKA Activity Type</b>						
<b>Agency Name</b>	Investigating Suspicious Person/Circumstances	Ambush No Warning	Mentally Deranged	Traffic Pursuits/Stops	All Other	Total
Roane County Sheriff's Office	0	0	0	1	2	5
Robertson County Sheriff's Office	2	0	0	1	0	3
Rutherford County Sheriff's Office	0	0	0	0	2	11
Scott County Sheriff's Office	0	0	0	0	1	1
Sequatchie County Sheriff's Office	0	0	0	1	2	3
Sevier County Sheriff's Office	1	0	0	0	0	3
Shelby County Sheriff's Office	10	0	2	9	4	59
Smith County Sheriff's Office	0	0	0	0	0	2
Stewart County Sheriff's Office	1	0	0	0	1	4
Sullivan County Sheriff's Office	0	0	0	3	0	25
Sumner County Sheriff's Office	0	0	0	0	0	2
Tipton County Sheriff's Office	0	0	1	0	4	17
Unicoi County Sheriff's Office	2	0	0	1	0	3
Union County Sheriff's Office	2	0	0	0	0	4
Warren County Sheriff's Office	1	0	0	0	1	9
Washington County Sheriff's Office	1	3	0	3	1	24



<b>LEOKA Activity Type</b>						
<b>Agency Name</b>	<b>Responding to Disturbance</b>	<b>Burglary in Progress or Pursuit</b>	<b>Robbery in Progress or Pursuit</b>	<b>Attempting Other Arrests</b>	<b>Civil Disorder</b>	<b>Handling/Transporting/Custody of Prisoners</b>
Weakley County Sheriff's Office	0	0	0	2	0	3
White County Sheriff's Office	1	0	0	2	0	2
Williamson County Sheriff's Office	2	0	0	2	0	3
Wilson County Sheriff's Office	6	0	0	6	0	7
Alcoa Police Department	3	2	0	4	0	0
Alexandria Police Department	0	0	0	0	0	0
Algood Police Department	1	0	0	0	0	0
Ashland City Police Department	1	0	0	0	0	0
Athens Police Department	4	0	1	1	0	1
Bartlett Police Department	0	0	0	1	1	0
Bean Station Police Department	1	0	0	0	0	0
Bells Police Department	3	0	0	0	0	0
Benton Police Department	0	0	0	0	2	0
Bolivar Police Department	0	0	0	2	0	2
Brentwood Police Department	1	0	0	1	0	0
Bristol Police Department	4	0	0	10	0	0



<b>LEOKA Activity Type</b>						
<b>Agency Name</b>	Investigating Suspicious Person/Circumstances	Ambush No Warning	Mentally Deranged	Traffic Pursuits/Stops	All Other	Total
Weakley County Sheriff's Office	1	0	0	2	0	8
White County Sheriff's Office	0	0	0	0	2	7
Williamson County Sheriff's Office	1	1	0	6	0	15
Wilson County Sheriff's Office	1	0	0	2	3	25
Alcoa Police Department	0	0	0	0	0	9
Alexandria Police Department	0	0	0	1	0	1
Algood Police Department	0	0	0	0	0	1
Ashland City Police Department	0	0	0	0	0	1
Athens Police Department	0	0	0	1	0	8
Bartlett Police Department	0	0	0	0	0	2
Bean Station Police Department	0	0	0	0	0	1
Bells Police Department	0	0	0	0	0	3
Benton Police Department	0	0	0	0	0	2
Bolivar Police Department	0	0	0	0	1	5
Brentwood Police Department	0	0	0	0	0	2
Bristol Police Department	1	0	0	1	0	16



<b>LEOKA Activity Type</b>						
<b>Agency Name</b>	<b>Responding to Disturbance</b>	<b>Burglary in Progress or Pursuit</b>	<b>Robbery in Progress or Pursuit</b>	<b>Attempting Other Arrests</b>	<b>Civil Disorder</b>	<b>Handling/Transporting/Custody of Prisoners</b>
Brownsville Police Department	0	0	0	0	0	0
Calhoun Police Department	0	0	0	0	0	0
Camden Police Department	0	0	0	1	0	0
Chattanooga Housing Authority	0	0	0	0	0	0
Chattanooga Police Department	32	1	5	19	4	2
Church Hill Public Safety	1	0	0	0	0	2
Clarksville Police Department	10	0	0	7	1	12
Cleveland Police Department	8	0	0	0	0	0
Clinton Police Department	0	0	0	1	0	0
Collegedale Police Department	0	0	0	1	0	0
Collierville Police Department	3	0	1	5	0	0
Columbia Police Department	3	1	0	1	0	2
Cookeville Police Department	6	0	0	0	0	0
Crossville Police Department	1	0	0	3	0	0
Crump Police Department	0	0	0	0	0	0
Dandridge Police Department	0	0	0	0	0	0





<b>LEOKA Activity Type</b>						
<b>Agency Name</b>	Investigating Suspicious Person/Circumstances	Ambush No Warning	Mentally Deranged	Traffic Pursuits/Stops	All Other	Total
Brownsville Police Department	1	0	0	0	2	3
Calhoun Police Department	0	0	0	1	0	1
Camden Police Department	0	0	0	2	0	3
Chattanooga Housing Authority	1	0	0	0	2	3
Chattanooga Police Department	9	0	5	8	13	98
Church Hill Public Safety	1	0	0	0	0	4
Clarksville Police Department	4	2	0	4	16	56
Cleveland Police Department	0	0	0	0	3	11
Clinton Police Department	1	0	0	0	0	2
Collegedale Police Department	0	0	0	1	0	2
Collierville Police Department	0	0	0	0	0	9
Columbia Police Department	0	0	0	1	1	9
Cookeville Police Department	1	0	0	1	0	8
Crossville Police Department	0	0	0	2	1	7
Crump Police Department	0	0	0	4	0	4
Dandridge Police Department	4	0	0	0	0	4



<b>LEOKA Activity Type</b>						
<b>Agency Name</b>	<b>Responding to Disturbance</b>	<b>Burglary in Progress or Pursuit</b>	<b>Robbery in Progress or Pursuit</b>	<b>Attempting Other Arrests</b>	<b>Civil Disorder</b>	<b>Handling/Transporting/Custody of Prisoners</b>
Dayton Police Department	4	0	0	3	0	0
Dickson Police Department	1	0	0	4	1	1
Dover Police Department	0	0	0	0	0	0
Dunlap Police Department	1	0	0	0	0	0
Dyersburg Police Department	1	0	0	0	0	0
East Ridge Police Department	5	0	0	0	0	0
Elizabethton Police Department	0	0	0	0	0	0
Erin Police Department	1	0	0	0	0	0
Erwin Police Department	0	0	1	1	0	1
Etowah Police Department	2	0	0	0	0	1
Fairview Police Department	3	0	0	1	0	0
Fayetteville Police Department	0	0	0	0	0	1
Franklin Police Department	4	0	0	1	0	1
Gallatin Police Department	12	0	0	0	0	0
Gallaway Police Department	1	0	0	0	0	0
Gatlinburg Police Department	5	0	0	0	0	4



<b>LEOKA Activity Type</b>						
<b>Agency Name</b>	Investigating Suspicious Person/Circumstances	Ambush No Warning	Mentally Deranged	Traffic Pursuits/Stops	All Other	Total
Dayton Police Department	0	0	0	0	0	7
Dickson Police Department	0	0	0	0	2	9
Dover Police Department	0	0	0	2	0	2
Dunlap Police Department	0	0	1	0	1	3
Dyersburg Police Department	0	0	0	2	0	3
East Ridge Police Department	0	0	0	0	0	5
Elizabethton Police Department	0	0	1	3	0	4
Erin Police Department	0	0	0	0	1	2
Erwin Police Department	0	0	0	0	0	3
Etowah Police Department	0	0	0	1	0	4
Fairview Police Department	0	0	0	0	0	4
Fayetteville Police Department	0	0	0	0	0	1
Franklin Police Department	1	0	0	2	0	9
Gallatin Police Department	1	0	0	1	0	14
Gallaway Police Department	1	0	0	0	2	4
Gatlinburg Police Department	1	0	3	0	0	13



<b>LEOKA Activity Type</b>						
<b>Agency Name</b>	<b>Responding to Disturbance</b>	<b>Burglary in Progress or Pursuit</b>	<b>Robbery in Progress or Pursuit</b>	<b>Attempting Other Arrests</b>	<b>Civil Disorder</b>	<b>Handling/Transporting/Custody of Prisoners</b>
Germantown Police Department	3	0	0	1	0	0
Gleason Police Department	0	0	0	2	0	0
Goodlettsville Police Department	4	0	0	0	0	0
Gordonsville Police Department	1	0	0	0	0	0
Greenbrier Police Department	0	0	0	2	0	0
Greeneville Police Department	4	0	0	1	0	0
Halls Police Department	0	0	0	0	0	1
Harriman Police Department	0	0	0	0	0	0
Henderson Police Department	1	0	0	0	0	0
Hendersonville Police Department	7	5	0	9	0	0
Henning Police Department	0	0	0	0	0	0
Hohenwald Police Department	1	0	0	0	0	0
Humboldt Police Department	1	0	0	0	0	1
Huntingdon Police Department	0	0	0	0	0	0
Huntland Police Department	1	0	0	0	0	0
Jacksboro Police Department	1	0	0	1	0	0



<b>LEOKA Activity Type</b>						
<b>Agency Name</b>	Investigating Suspicious Person/Circumstances	Ambush No Warning	Mentally Deranged	Traffic Pursuits/Stops	All Other	Total
Germantown Police Department	0	0	0	1	0	5
Gleason Police Department	0	0	0	1	0	3
Goodlettsville Police Department	0	0	0	1	4	9
Gordonsville Police Department	0	0	0	0	0	1
Greenbrier Police Department	0	0	0	0	0	2
Greeneville Police Department	0	0	0	1	1	7
Halls Police Department	0	0	0	0	0	1
Harriman Police Department	0	0	0	0	1	1
Henderson Police Department	1	0	0	0	0	2
Hendersonville Police Department	0	0	0	2	4	27
Henning Police Department	0	0	0	0	1	1
Hohenwald Police Department	0	0	0	0	0	1
Humboldt Police Department	2	0	1	2	1	8
Huntingdon Police Department	0	0	1	0	0	1
Huntland Police Department	0	0	0	0	1	2
Jacksboro Police Department	0	0	0	1	0	3



<b>LEOKA Activity Type</b>						
<b>Agency Name</b>	<b>Responding to Disturbance</b>	<b>Burglary in Progress or Pursuit</b>	<b>Robbery in Progress or Pursuit</b>	<b>Attempting Other Arrests</b>	<b>Civil Disorder</b>	<b>Handling/Transporting/Custody of Prisoners</b>
Jackson Police Department	10	0	0	12	0	1
Jamestown Police Department	0	0	0	0	0	0
Jasper Police Department	3	0	0	0	0	0
Jefferson City Police Department	3	0	0	0	0	0
Jellico Police Department	1	0	0	0	0	0
Johnson City Police Department	8	0	0	3	0	3
Jonesborough Police Department	0	0	0	0	0	0
Kingsport Police Department	14	0	0	2	0	2
Knoxville Police Department	22	1	0	25	1	6
LaFayette Police Department	0	0	0	0	0	0
LaFollette Police Department	4	0	0	7	0	0
Lawrenceburg Police Department	2	0	0	0	0	0
Lebanon Police Department	3	0	0	1	0	0
Lenoir City Police Department	1	0	0	2	0	0
Lewisburg Police Department	3	0	0	0	0	0
Lexington Police Department	1	0	0	1	0	1



<b>LEOKA Activity Type</b>						
<b>Agency Name</b>	Investigating Suspicious Person/Circumstances	Ambush No Warning	Mentally Deranged	Traffic Pursuits/Stops	All Other	Total
Jackson Police Department	3	0	1	1	3	31
Jamestown Police Department	1	0	0	0	1	2
Jasper Police Department	1	0	0	0	2	6
Jefferson City Police Department	0	0	0	0	0	3
Jellico Police Department	0	0	0	0	0	1
Johnson City Police Department	3	0	2	2	1	22
Jonesborough Police Department	0	0	0	1	0	1
Kingsport Police Department	5	0	0	2	0	25
Knoxville Police Department	6	0	0	3	4	68
LaFayette Police Department	0	0	2	0	0	2
LaFollette Police Department	1	0	0	0	0	12
Lawrenceburg Police Department	0	0	0	2	0	4
Lebanon Police Department	6	2	0	1	1	14
Lenoir City Police Department	0	0	0	0	0	3
Lewisburg Police Department	2	0	0	0	0	5
Lexington Police Department	1	0	0	0	0	4



<b>LEOKA Activity Type</b>						
<b>Agency Name</b>	<b>Responding to Disturbance</b>	<b>Burglary in Progress or Pursuit</b>	<b>Robbery in Progress or Pursuit</b>	<b>Attempting Other Arrests</b>	<b>Civil Disorder</b>	<b>Handling/Transporting/Custody of Prisoners</b>
Madisonville Police Department	0	0	0	1	0	0
Manchester Police Department	2	0	0	0	0	0
Martin Police Department	2	0	0	0	0	0
Mason Police Department	0	0	0	1	0	0
Maynardville Police Department	3	0	0	0	0	1
McKenzie Police Department	1	0	0	0	0	0
Memphis Police Department	42	0	3	54	1	23
Millersville Police Department	0	0	0	1	0	0
Millington Police Department	2	0	0	0	1	0
Monteagle Police Department	0	0	0	1	0	0
Monterey Police Department	0	0	0	0	0	0
Morristown Police Department	0	0	0	2	0	3
Moscow Police Department	0	0	0	1	0	2
Mount Carmel Police Department	0	0	0	0	0	1
Mount Juliet Police Department	0	0	0	1	0	0
Munford Police Department	0	0	0	3	0	0





<b>LEOKA Activity Type</b>						
<b>Agency Name</b>	Investigating Suspicious Person/Circumstances	Ambush No Warning	Mentally Deranged	Traffic Pursuits/Stops	All Other	Total
Madisonville Police Department	0	0	0	0	0	1
Manchester Police Department	0	0	0	0	0	2
Martin Police Department	0	0	0	0	0	2
Mason Police Department	0	0	0	0	0	1
Maynardville Police Department	0	0	0	0	0	4
McKenzie Police Department	0	0	0	0	0	1
Memphis Police Department	28	5	6	14	29	205
Millersville Police Department	0	0	0	0	0	1
Millington Police Department	0	0	0	0	0	3
Monteagle Police Department	0	0	0	0	0	1
Monterey Police Department	0	0	0	1	0	1
Morristown Police Department	0	0	0	0	2	7
Moscow Police Department	0	0	0	1	0	4
Mount Carmel Police Department	0	0	0	0	0	1
Mount Juliet Police Department	0	0	0	1	0	2
Munford Police Department	0	0	0	0	1	4



<b>LEOKA Activity Type</b>						
<b>Agency Name</b>	<b>Responding to Disturbance</b>	<b>Burglary in Progress or Pursuit</b>	<b>Robbery in Progress or Pursuit</b>	<b>Attempting Other Arrests</b>	<b>Civil Disorder</b>	<b>Handling/Transporting/Custody of Prisoners</b>
Murfreesboro Police Department	23	0	2	16	1	6
Nashville Metro Police Department	17	2	0	28	0	4
New Tazewell Police Department	0	0	0	1	0	0
Newbern Police Department	0	0	0	1	0	0
Newport Police Department	1	0	1	1	0	0
Oak Ridge Police Department	2	0	0	1	0	0
Oakland Police Department	0	0	0	1	0	0
Oliver Springs Police Department	0	0	0	0	0	0
Oneida Police Department	2	0	0	0	0	0
Paris Police Department	0	0	0	1	0	0
Parsons Police Department	1	0	0	0	0	0
Pigeon Forge Police Department	1	0	0	1	0	1
Plainview Police Department	0	0	0	1	0	0
Pleasant View Police Department	1	0	0	0	0	0
Portland Police Department	1	0	0	4	0	7
Pulaski Police Department	1	0	0	1	0	0



<b>LEOKA Activity Type</b>						
<b>Agency Name</b>	Investigating Suspicious Person/Circumstances	Ambush No Warning	Mentally Deranged	Traffic Pursuits/Stops	All Other	Total
Murfreesboro Police Department	10	0	1	5	2	66
Nashville Metro Police Department	20	0	0	12	5	88
New Tazewell Police Department	0	0	0	0	0	1
Newbern Police Department	0	0	0	0	0	1
Newport Police Department	0	0	0	0	0	3
Oak Ridge Police Department	0	0	0	1	1	5
Oakland Police Department	0	0	0	1	0	2
Oliver Springs Police Department	0	0	0	1	0	1
Oneida Police Department	0	0	0	1	1	4
Paris Police Department	0	0	0	1	0	2
Parsons Police Department	1	0	0	0	0	2
Pigeon Forge Police Department	0	0	1	0	1	5
Plainview Police Department	0	0	0	0	0	1
Pleasant View Police Department	0	0	0	0	1	2
Portland Police Department	1	1	1	0	0	15
Pulaski Police Department	0	0	0	0	0	2



<b>LEOKA Activity Type</b>						
<b>Agency Name</b>	<b>Responding to Disturbance</b>	<b>Burglary in Progress or Pursuit</b>	<b>Robbery in Progress or Pursuit</b>	<b>Attempting Other Arrests</b>	<b>Civil Disorder</b>	<b>Handling/Transporting/Custody of Prisoners</b>
Puryear Police Department	0	0	0	0	0	0
Red Bank Police Department	1	0	0	3	0	0
Ridgely Police Department	0	0	0	0	0	1
Ridgetop Police Department	0	0	0	0	0	0
Ripley Police Department	0	0	0	0	0	0
Rockwood Police Department	2	0	0	0	0	0
Rogersville Police Department	2	0	0	0	0	0
Rutherford Police Department	0	0	0	0	0	0
Savannah Police Department	1	0	0	0	0	0
Sevierville Police Department	2	0	0	3	0	0
Shelbyville Police Department	2	0	0	0	0	1
Signal Mountain Police Department	1	0	0	0	0	0
Smithville Police Department	0	0	0	0	0	1
Smyrna Police Department	2	0	0	1	0	0
Soddy Daisy Police Department	3	0	0	3	0	0
South Carthage Police Department	0	0	0	0	0	0



<b>LEOKA Activity Type</b>						
<b>Agency Name</b>	Investigating Suspicious Person/Circumstances	Ambush No Warning	Mentally Deranged	Traffic Pursuits/Stops	All Other	Total
Puryear Police Department	0	0	0	1	0	1
Red Bank Police Department	6	0	0	0	0	10
Ridgely Police Department	0	0	0	0	0	1
Ridgetop Police Department	0	0	0	1	0	1
Ripley Police Department	0	0	0	1	0	1
Rockwood Police Department	0	0	0	0	0	2
Rogersville Police Department	0	0	0	0	0	2
Rutherford Police Department	0	0	0	0	1	1
Savannah Police Department	0	0	0	0	0	1
Sevierville Police Department	1	0	0	0	1	7
Shelbyville Police Department	0	0	0	0	1	4
Signal Mountain Police Department	0	0	0	0	0	1
Smithville Police Department	0	0	0	0	0	1
Smyrna Police Department	0	0	1	0	0	4
Soddy Daisy Police Department	0	0	0	2	2	10
South Carthage Police Department	0	0	1	0	0	1



<b>LEOKA Activity Type</b>						
<b>Agency Name</b>	<b>Responding to Disturbance</b>	<b>Burglary in Progress or Pursuit</b>	<b>Robbery in Progress or Pursuit</b>	<b>Attempting Other Arrests</b>	<b>Civil Disorder</b>	<b>Handling/Transporting/Custody of Prisoners</b>
Spring City Police Department	0	0	0	0	0	0
Spring Hill Police Department	1	0	0	0	0	0
Springfield Police Department	8	0	0	0	0	0
St. Joseph Police Department	0	0	0	1	0	0
Sweetwater Police Department	0	0	0	0	0	0
Tazewell Police Department	4	0	0	2	0	0
Toone Police Department	0	0	0	0	0	0
Tracy City Police Department	0	0	0	0	0	0
Trenton Police Department	1	0	0	0	0	0
Troy Police Department	0	0	0	0	0	0
Tulahoma Police Department	5	0	0	2	0	1
Union City Police Department	2	0	0	3	0	2
Wartrace Police Department	2	0	0	0	0	0
Waynesboro Police Department	1	0	0	0	0	1
Westmoreland Police Department	1	0	0	1	0	0
White Bluff Police Department	1	0	0	0	0	0



<b>LEOKA Activity Type</b>						
<b>Agency Name</b>	Investigating Suspicious Person/Circumstances	Ambush No Warning	Mentally Deranged	Traffic Pursuits/Stops	All Other	Total
Spring City Police Department	0	0	0	0	1	1
Spring Hill Police Department	0	0	3	0	0	4
Springfield Police Department	0	0	0	0	0	8
St. Joseph Police Department	0	0	0	1	0	2
Sweetwater Police Department	0	0	1	0	0	1
Tazewell Police Department	0	0	0	1	1	8
Toone Police Department	0	0	1	0	0	1
Tracy City Police Department	0	0	0	0	1	1
Trenton Police Department	0	0	0	0	0	1
Troy Police Department	0	0	0	1	0	1
Tulahoma Police Department	1	0	0	0	0	9
Union City Police Department	0	0	2	0	0	9
Wartrace Police Department	0	0	0	0	0	2
Waynesboro Police Department	1	0	0	0	0	3
Westmoreland Police Department	0	0	0	0	1	3
White Bluff Police Department	0	0	0	0	0	1



<b>LEOKA Activity Type</b>						
<b>Agency Name</b>	<b>Responding to Disturbance</b>	<b>Burglary in Progress or Pursuit</b>	<b>Robbery in Progress or Pursuit</b>	<b>Attempting Other Arrests</b>	<b>Civil Disorder</b>	<b>Handling/Transporting/Custody of Prisoners</b>
White Pine Police Department	1	0	0	0	0	0
Whiteville Police Department	0	0	0	0	0	0
Whitwell Police Department	0	0	0	0	0	0
Winchester Police Department	1	0	0	2	0	1
Woodbury Police Department	2	0	0	0	0	0
Middle Tennessee State University	0	0	0	2	0	0
Southwest Tennessee Community College	1	0	0	0	0	0
Tennessee State University	0	0	0	0	0	0
University of Memphis	0	0	0	0	0	0
University of Tennessee at Chattanooga	1	0	0	2	2	0
University of Tennessee at Knoxville	1	0	0	1	0	0
Vanderbilt University	3	0	0	2	0	1
West Tennessee Violent Crimes Task Force	0	0	0	1	0	0
Tennessee Bureau of Investigation	0	0	0	1	0	0
Tennessee Department of Safety	1	0	0	0	0	0
Cumberland Trail State Park	0	0	0	0	0	0





<b>LEOKA Activity Type</b>						
<b>Agency Name</b>	Investigating Suspicious Person/Circumstances	Ambush No Warning	Mentally Deranged	Traffic Pursuits/Stops	All Other	Total
White Pine Police Department	0	0	0	0	0	1
Whiteville Police Department	0	0	0	2	0	2
Whitwell Police Department	1	0	0	0	0	1
Winchester Police Department	0	0	0	0	0	4
Woodbury Police Department	0	0	0	0	1	3
Middle Tennessee State University	0	0	0	0	0	2
Southwest Tennessee Community College	0	0	0	0	0	1
Tennessee State University	0	0	0	0	1	1
University of Memphis	0	0	0	1	0	1
University of Tennessee at Chattanooga	0	0	0	0	0	5
University of Tennessee at Knoxville	0	0	0	0	1	3
Vanderbilt University	0	0	1	0	1	8
West Tennessee Violent Crimes Task Force	0	0	0	0	0	1
Tennessee Bureau of Investigation	0	0	0	0	1	2
Tennessee Department of Safety	1	0	0	2	5	9
Cumberland Trail State Park	0	0	0	0	1	1



**2012**  
**Employment**  
**Numbers**  
**by**  
**Agency**  
**as of October 31, 2012**



Agency	LE Male	LE Female	Civ Male	Civ Female	Total
10th Judicial Drug Task Force	9	0	0	1	10
12th Judicial Drug Task Force	2	0	0	0	2
13th Judicial Drug Task Force	0	0	0	0	0
14th Judicial Drug Task Force	2	0	0	0	2
15th Judicial Drug Task Force	3	0	0	1	4
17th Judicial Drug Task Force	3	0	0	0	3
18th Judicial Drug Task Force	7	2	0	0	9
19th Judicial Drug Task Force	8	0	1	0	9
1st Judicial Drug Task Force	3	1	0	1	5
21st Judicial Drug Task Force	6	1	1	1	9
22nd Judicial Drug Task Force	2	0	0	0	2
23rd Judicial Drug Task Force	6	0	0	2	8
24th Judicial Drug Task Force	1	0	0	1	2
25th Judicial Drug Task Force	2	0	0	0	2
27th Judicial Drug Task Force	0	0	0	1	1
2nd Judicial Drug Task Force	0	0	0	1	1
31st Judicial Drug Task Force	0	0	0	0	0
3rd Judicial Drug Task Force	4	0	1	0	5
4th Judicial Drug Task Force	2	0	0	1	3
5th Judicial Drug Task Force	8	0	1	0	9
8th Judicial Drug Task Force	3	0	0	1	4
9th Judicial Drug Task Force	2	0	0	0	2
Adamsville Police Department	6	0	1	0	7
Alamo Police Department	4	0	0	0	4
Alcoa Police Department	36	3	2	6	47
Alexandria Police Department	3	0	0	0	3
Algood Police Department	11	1	0	0	12
Anderson County Sheriffs Office	57	2	80	37	176
Ardmore Police Department	7	0	4	0	11
Ashland City Police Department	14	0	0	2	16
Athens Police Department	29	2	0	2	33
Atoka Police Department	18	0	1	0	19
Austin Peay State University	8	5	4	6	23
Baileyton Police Department	2	0	0	0	2
Baneberry Police Department	0	0	0	0	0



Agency	LE Male	LE Female	Civ Male	Civ Female	Total
Bartlett Police Department	101	6	11	23	141
Baxter Police Department	5	0	0	0	5
Bean Station Police Department	6	0	0	0	6
Bedford County Sheriffs Office	34	2	32	11	79
Belle Meade Police Department	14	2	3	1	20
Bells Police Department	4	0	0	0	4
Benton County Sheriffs Office	19	1	17	22	59
Benton Police Department	7	0	0	1	8
Berry Hill Police Department	13	0	0	4	17
Bethel Springs Police Department	1	0	0	0	1
Bicentennial Capitol Mall State Park	4	2	0	0	6
Big Hill Pond State Park	3	0	0	0	3
Big Ridge State Park	3	1	0	0	4
Big Sandy Police Department	1	0	0	0	1
Blaine Police Department	1	0	0	0	1
Bledsoe County Sheriffs Office	12	0	17	9	38
Bledsoe Creek State Park	2	0	0	0	2
Blount County Sheriffs Office	113	16	89	53	271
Bluff City Police Department	7	0	0	1	8
Bolivar Police Department	18	2	0	1	21
Booker T. Washington State Park	2	1	0	0	3
Bradford Police Department	4	0	1	0	5
Bradley County Sheriffs Office	96	10	63	32	201
Brentwood Police Department	54	3	4	10	71
Brighton Police Department	5	1	0	0	6
Bristol Police Department	64	4	5	17	90
Brownsville Police Department	29	1	0	4	34
Bruceton Police Department	3	0	0	0	3
Burgess Falls Natural Area	3	0	0	0	3
Burns Police Department	3	0	0	0	3
Calhoun Police Department	0	0	0	0	0
Camden Police Department	13	1	2	2	18
Campbell County Sheriffs Office	32	3	18	14	67
Cannon County Sheriffs Office	13	1	10	9	33
Carroll County Sheriffs Office	21	2	8	14	45



Agency	LE Male	LE Female	Civ Male	Civ Female	Total
Carter County Sheriffs Office	47	8	64	24	143
Carthage Police Department	7	0	1	3	11
Caryville Police Department	5	1	0	0	6
Cedars of Lebanon State Park	3	1	0	0	4
Celina Police Department	5	0	1	1	7
Centerville Police Department	11	1	4	3	19
Chapel Hill Police Department	5	0	0	0	5
Charleston Police Department	3	0	0	0	3
Chattanooga Housing Authority	3	2	0	1	6
Chattanooga Metro Airport	10	0	0	0	10
Chattanooga Police Department	435	35	24	55	549
Cheatham County Sheriffs Office	37	0	25	10	72
Chester County Sheriffs Office	12	1	14	19	46
Chickasaw State Park	4	0	0	0	4
Christian Brothers University	8	1	3	3	15
Church Hill Public Safety	10	0	0	1	11
City of Dickson Park Ranger Division	2	1	6	2	11
Claiborne County Sheriffs Office	31	2	36	22	91
Clarksburg Police Department	0	0	0	0	0
Clarksville Police Department	233	36	10	48	327
Clay County Sheriffs Office	12	1	5	4	22
Cleveland Police Department	78	5	3	9	95
Clifton Police Department	5	0	1	0	6
Clinton Police Department	27	1	4	3	35
Cocke County Sheriffs Office	36	1	18	12	67
Coffee County Sheriffs Office	42	4	23	16	85
Collegedale Police Department	18	1	0	0	19
Collierville Police Department	86	9	10	25	130
Collinwood Police Department	4	0	0	0	4
Columbia Police Department	82	5	1	8	96
Cookeville Police Department	67	5	7	14	93
Coopertown Police Department	0	0	0	1	1
Cornersville Police Department	4	0	0	0	4
Cove Lake State Park	4	0	0	0	4



Agency	LE Male	LE Female	Civ Male	Civ Female	Total
Covington Police Department	34	1	1	0	36
Cowan Police Department	5	0	0	0	5
Crockett County Sheriffs Office	14	1	9	9	33
Cross Plains Police Department	4	0	0	0	4
Crossville Police Department	40	2	1	3	46
Crump Police Department	3	0	0	0	3
Cumberland City Police Department	4	0	0	0	4
Cumberland County Sheriffs Office	46	2	29	27	104
Cumberland Gap Police Office	0	0	0	0	0
Cumberland Mountain State Park	3	1	0	0	4
Cumberland Trail State Park	7	0	0	0	7
Dandridge Police Department	10	0	0	1	11
David Crockett State Park	3	1	0	0	4
Day Crockett Birthplace State Park	2	1	0	0	3
Dayton Police Department	18	0	1	1	20
Decatur County Sheriffs Office	14	0	11	7	32
Decatur Police Department	5	0	0	0	5
Decaturville Police Department	1	0	0	0	1
Decherd Police Department	9	0	0	1	10
DeKalb County Sheriffs Office	22	0	13	8	43
Dickson County Sheriffs Office	57	4	51	21	133
Dickson Police Department	43	2	1	4	50
Dover Police Department	5	1	0	0	6
Dresden Police Department	9	0	0	1	10
Dunbar Cave Natural Area	2	1	0	0	3
Dunlap Police Department	11	0	0	2	13
Dyer County Sheriffs Office	32	0	20	26	78
Dyer Police Department	6	0	0	0	6
Dyersburg Police Department	48	9	0	8	65
Eagleville Police Department	1	0	0	0	1
East Ridge Police Department	36	1	0	4	41
East Tennessee State University	16	3	4	3	26
Edgar Evins State Park	4	0	0	0	4
Elizabethton Police Department	37	2	0	4	43
Elkton Police Department	1	0	0	0	1



Agency	LE Male	LE Female	Civ Male	Civ Female	Total
Englewood Police Department	5	0	0	0	5
Erin Police Department	5	0	0	1	6
Erwin Police Department	12	0	0	0	12
Estill Springs Police Department	6	0	0	0	6
Ethridge Police Department	0	0	0	0	0
Etowah Police Department	10	0	1	0	11
Fairview Police Department	19	3	0	1	23
Fall Creek Falls State Park	8	0	0	0	8
Fayette County Sheriffs Office	39	2	26	24	91
Fayetteville Police Department	23	0	0	1	24
Fentress County Sheriffs Office	22	0	7	6	35
Fort Loudoun State Historic Park	4	0	0	0	4
Fort Pillow Historic State Park	2	0	0	0	2
Franklin County Sheriffs Office	34	1	33	12	80
Franklin Police Department	105	17	3	21	146
Friendship Police Department	1	0	0	0	1
Frozen Head Natural Area	3	1	0	0	4
Gadsden Police Department	0	0	0	0	0
Gainesboro Police Department	4	1	0	1	6
Gallatin Police Department	60	6	5	19	90
Galloway Police Department	2	0	0	0	2
Gates Police Department	2	0	0	0	2
Gatlinburg Police Department	37	3	6	4	50
Germantown Police Department	78	10	3	21	112
Gibson County Sheriffs Office	29	1	30	16	76
Gibson Police Department	5	0	0	0	5
Giles County Sheriffs Office	29	0	21	17	67
Gleason Police Department	5	0	0	0	5
Goodlettsville Police Department	31	4	4	11	50
Gordonsville Police Department	5	0	0	0	5
Grainger County Sheriffs Office	16	0	11	9	36
Grand Junction Police Department	1	0	0	0	1
Graysville Police Department	5	0	0	0	5
Greenbrier Police Department	13	0	1	0	14
Greene County Sheriffs Office	54	2	57	35	148



Agency	LE Male	LE Female	Civ Male	Civ Female	Total
Greeneville Police Department	44	3	0	2	49
Greenfield Police Department	7	0	0	1	8
Grundy County Sheriffs Office	11	2	7	5	25
Halls Police Department	8	0	0	0	8
Hamblen County Sheriffs Office	30	2	31	20	83
Hamilton County Sheriffs Office	148	7	146	64	365
Hancock County Sheriffs Office	12	0	10	10	32
Hardeman County Sheriffs Office	26	1	13	34	74
Hardin County Sheriffs Office	20	0	13	11	44
Harpeth Scenic River & Narrows Historic	2	1	0	0	3
Harriman Police Department	19	0	0	1	20
Harrison Bay State Park	4	0	0	0	4
Hawkins County Sheriffs Office	48	2	30	22	102
Haywood County Sheriffs Office	17	2	14	13	46
Henderson County Sheriffs Office	24	0	14	16	54
Henderson Police Department	15	0	0	0	15
Hendersonville Police Department	83	11	7	20	121
Henning Police Department	4	2	0	0	6
Henry County Sheriffs Office	32	1	21	13	67
Henry Horton State Park	4	0	0	0	4
Henry Police Department	2	0	0	0	2
Hickman County Sheriffs Office	20	0	10	9	39
Hiwassee and Ocoee State Scenic Rivers	5	1	0	0	6
Hohenwald Police Department	12	0	0	1	13
Hollow Rock Police Department	1	1	0	0	2
Hornbeak Police Department	1	0	0	0	1
Houston County Sheriffs Office	11	0	6	7	24
Humboldt Police Department	26	0	2	4	32
Humphreys County Sheriffs Office	19	1	8	9	37
Huntingdon Police Department	10	2	1	3	16
Huntland Police Department	5	1	0	0	6
Indian Mountain State Park	1	1	0	0	2
Jacksboro Police Department	5	0	0	0	5
Jackson County Sheriffs Office	11	2	13	14	40
Jackson Police Department	197	24	5	38	264





Agency	LE Male	LE Female	Civ Male	Civ Female	Total
Jamestown Police Department	9	0	0	0	9
Jasper Police Department	6	2	0	0	8
Jefferson City Police Department	19	0	0	2	21
Jefferson County Sheriffs Office	38	6	34	16	94
Jellico Police Department	8	0	0	1	9
Johnson City Police Department	134	12	2	25	173
Johnson County Sheriffs Office	15	1	16	14	46
Johnsonville State Historic Area	1	0	0	0	1
Jonesborough Police Department	15	2	2	2	21
Kenton Police Department	4	1	0	0	5
Kimball Police Department	9	0	0	0	9
Kingsport Police Department	108	7	11	37	163
Kingston Police Department	11	1	1	0	13
Kingston Springs Police Department	6	0	0	0	6
Knox County Sheriffs Office	398	61	427	244	1,130
Knoxville Metro Airport Authority	24	2	10	8	44
Knoxville Police Department	363	47	33	66	509
Lafayette Police Department	16	0	0	6	22
LaFollette Police Department	20	1	0	8	29
Lake City Police Department	7	0	1	0	8
Lake County Sheriffs Office	9	0	6	5	20
Lauderdale County Sheriffs Office	21	0	21	20	62
LaVergne Police Department	45	4	7	9	65
Lawrence County Sheriffs Office	39	6	28	17	90
Lawrenceburg Police Department	35	1	1	4	41
Lebanon Police Department	70	3	3	13	89
Lenoir City Police Department	21	4	0	1	26
Lewis County Sheriffs Office	16	0	7	9	32
Lewisburg Police Department	27	3	6	5	41
Lexington Police Department	21	6	1	4	32
Lincoln County Sheriffs Office	24	2	19	16	61
Lincoln Memorial University	5	1	7	2	15
Livingston Police Department	19	0	4	0	23
Long Hunter State Park	4	0	0	0	4
Lookout Mountain Police Department	16	0	1	3	20
Loretto Police Department	4	0	0	0	4



Agency	LE Male	LE Female	Civ Male	Civ Female	Total
Loudon County Sheriffs Office	43	1	13	12	69
Loudon Police Department	14	1	0	1	16
Macon County Sheriffs Office	24	1	17	18	60
Madison County Sheriffs Office	65	9	84	73	231
Madisonville Police Department	15	0	3	0	18
Manchester Police Department	32	2	0	6	40
Marion County Sheriffs Office	18	2	11	14	45
Marshall County Sheriffs Office	21	1	15	14	51
Martin Police Department	27	1	2	7	37
Maryville Police Department	44	3	0	3	50
Mason Police Department	4	1	0	0	5
Maury City Police Department	0	0	0	0	0
Maury County Sheriffs Office	76	4	38	28	146
Maynardville Police Department	4	0	1	0	5
McEwen Police Department	4	0	0	0	4
McKenzie Police Department	14	2	0	4	20
McMinn County Sheriffs Office	31	1	20	17	69
McMinnville Police Department	29	4	0	4	37
McNairy County Sheriffs Office	16	1	10	10	37
Medina Police Department	11	0	0	0	11
Meeman- Shelby Forest State Park	3	3	0	0	6
Meigs County Sheriffs Office	14	0	7	10	31
Memphis Police Department	2,026	390	100	310	2,826
Memphis Shelby County Airport Authority	46	4	0	14	64
Metro Hartsville/Trousdale County Sheriffs Office	19	0	11	11	41
Metro Nashville Park Police	18	2	0	0	20
Middle Tennessee State University	31	5	3	5	44
Middleton Police Department	4	0	0	0	4
Milan Police Department	20	0	1	5	26
Millersville Police Department	11	0	0	6	17
Millington Police Department	31	4	3	9	47
Minor Hill Police Department	2	0	0	0	2
Monroe County Sheriffs Office	33	4	21	10	68
Monteagle Police Department	6	0	0	0	6
Monterey Police Department	6	1	0	1	8



Agency	LE Male	LE Female	Civ Male	Civ Female	Total
Montgomery Bell State Park	6	0	0	0	6
Montgomery County Sheriffs Office	67	8	160	80	315
Moore County Sheriffs Office	12	0	10	4	26
Morgan County Sheriffs Office	19	0	17	14	50
Morristown Police Department	76	6	0	7	89
Moscow Police Department	3	0	0	0	3
Mount Carmel Police Department	8	0	0	0	8
Mount Juliet Police Department	41	2	4	8	55
Mount Pleasant Police Department	11	0	3	5	19
Mountain City Police Department	9	0	0	0	9
Mousetail Landing State Park	2	0	0	0	2
Munford Police Department	12	2	1	0	15
Murfreesboro Police Department	201	22	4	46	273
Nashville Metro Airport Police Department	40	5	12	4	61
Nashville Metro Police Department	1,211	101	132	193	1,637
Natchez Trace State Park	4	1	0	0	5
Nathan Bedford Forrest State Park	3	0	0	0	3
New Hope Police Department	1	0	0	0	1
New Johnsonville Police Department	5	0	0	0	5
New Market Police Department	4	0	0	0	4
New Tazewell Police Department	10	0	0	0	10
Newbern Police Department	12	0	1	6	19
Newport Police Department	26	2	1	3	32
Niota Police Department	3	1	0	0	4
Nolensville Police Department	6	1	0	0	7
Norris Dam State Park	2	2	0	0	4
Norris Police Department	7	0	0	0	7
Northeast State Community College	5	1	0	0	6
Oak Ridge Police Department	56	5	3	11	75
Oakland Police Department	16	1	0	2	19
Obion County Sheriffs Office	25	1	16	20	62
Obion Police Department	4	0	0	0	4
Office of Inspector General	13	3	5	23	44
Old Stone Fort State Archeological Park	2	0	0	0	2
Oliver Springs Police Department	10	0	1	3	14



Agency	LE Male	LE Female	Civ Male	Civ Female	Total
Oneida Police Department	10	1	1	4	16
Overton County Sheriffs Office	23	1	18	14	56
Panther Creek State Park	2	0	0	0	2
Paris Landing State Park	4	1	0	0	5
Paris Police Department	24	2	4	7	37
Parsons Police Department	7	0	0	0	7
Perry County Sheriffs Department	15	1	7	9	32
Petersburg Police Department	2	0	0	0	2
Pickett County Sheriffs Office	10	0	2	3	15
Pickett State Park	3	1	0	0	4
Pickwick Landing State Park	4	1	0	0	5
Pigeon Forge Police Department	49	4	4	7	64
Pikeville Police Department	3	0	0	0	3
Pinson Mounds State Archeological Park	2	0	0	0	2
Piperton Police Department	9	0	0	0	9
Pittman Center Police Department	2	1	0	0	3
Plainview Police Department	1	0	0	0	1
Pleasant View Police Department	5	0	0	0	5
Polk County Sheriffs Office	19	0	17	15	51
Portland Police Department	25	0	1	6	32
Powells Crossroads Police Department	1	0	0	0	1
Pulaski Police Department	24	1	0	3	28
Puryear Police Department	2	0	0	1	3
Putnam County Sheriffs Office	56	6	42	22	126
Radnor Lake Natural Area	3	1	0	0	4
Red Bank Police Department	20	3	0	2	25
Red Boiling Springs Police Department	5	0	0	0	5
Red Clay State Historic Park	0	2	0	0	2
Reelfoot Lake State Park	4	0	0	0	4
Rhea County Sheriffs Office	42	11	0	0	53
Ridgely Police Department	5	0	0	0	5
Ridgetop Police Department	6	0	0	0	6
Ripley Police Department	24	2	7	2	35
Roan Mountain State Park	3	1	0	0	4
Roane County Sheriffs Office	36	0	19	13	68



Agency	LE Male	LE Female	Civ Male	Civ Female	Total
Robertson County Sheriffs Office	42	1	67	40	150
Rock Island State Park	3	1	0	0	4
Rockwood Police Department	15	0	0	1	16
Rogersville Police Department	12	0	3	1	16
Rossville Police Department	7	0	0	0	7
Rutherford County Sheriffs Office	199	14	82	110	405
Rutherford Police Department	3	0	0	0	3
Rutledge Police Department	4	0	0	0	4
Saltillo Police Department	0	0	0	0	0
Samburg Police Department	0	0	0	0	0
Savannah Police Department	17	0	0	2	19
Scott County Sheriffs Office	27	3	16	21	67
Scotts Hill Police Department	3	0	0	0	3
Selmer Police Department	18	0	0	2	20
Sequatchie County Sheriffs Office	16	2	10	10	38
Sevier County Sheriffs Office	87	11	80	48	226
Sevierville Police Department	51	3	3	12	69
Sgt. Alvin C. York State Park	2	0	0	0	2
Sharon Police Department	1	0	0	0	1
Shelby County Sheriffs Office	462	64	486	815	1,827
Shelbyville Police Department	39	2	1	7	49
Signal Mountain Police Department	15	1	0	1	17
Smith County Sheriffs Office	24	4	15	12	55
Smithville Police Department	12	0	0	1	13
Smyrna Police Department	65	7	3	20	95
Smyrna/Rutherford Co. Airport Authority	3	0	0	0	3
Sneedville Police Department	0	0	0	0	0
Soddy Daisy Police Department	29	1	1	4	35
Somerville Police Department	10	1	0	0	11
South Carthage Police Department	4	0	0	0	4
South Cumberland Natural Area	5	0	0	0	5
South Fulton Police Department	6	0	0	1	7
South Pittsburg Police Department	8	1	0	0	9
Southwest Tennessee Community College	14	1	6	7	28
Sparta Police Department	15	0	0	1	16



Agency	LE Male	LE Female	Civ Male	Civ Female	Total
Spencer Police Department	3	0	0	0	3
Spring City Police Department	5	2	0	0	7
Spring Hill Police Department	38	4	1	2	45
Springfield Police Department	33	3	10	22	68
St. Joseph Police Department	0	0	0	1	1
Standing Stone State Park	3	1	0	0	4
Stewart County Sheriffs Office	18	0	10	13	41
Sullivan County Sheriffs Office	99	15	90	51	255
Sumner County Sheriffs Office	68	4	130	66	268
Surgoinsville Police Department	2	0	0	0	2
Sweetwater Police Department	18	1	0	1	20
Sycamore Shoals State Historic Park	1	1	0	0	2
T.O. Fuller State Park	3	0	0	0	3
Tazewell Police Department	6	0	0	0	6
Tellico Plains Police Department	3	0	0	0	3
Tennessee Alcoholic Beverage Commission	20	5	5	24	54
Tennessee Bureau of Investigation	188	80	47	144	459
Tennessee Department of Correction	12	3	3	1	19
Tennessee Department of Revenue - Special Investigations	20	1	8	14	43
Tennessee Department of Safety	764	33	235	562	1,594
Tennessee State Fire Marshall - Arson/Bomb	20	3	2	3	28
Tennessee State University	30	2	22	25	79
Tennessee Tech University	13	1	2	5	21
Tennessee Wildlife Resources Agency	54	1	4	5	64
Tennessee Wildlife Resources Agency-Crossville	43	1	3	1	48
Tennessee Wildlife Resources Agency-Jackson	41	1	3	1	46
Tennessee Wildlife Resources Agency-Morristown	42	3	2	2	49
Tims Ford State Park	4	1	0	0	5
Tipton County Sheriffs Office	47	4	27	14	92
Tiptonville Police Department	6	0	0	0	6
Toone Police Department	0	0	0	0	0
Townsend Police Department	4	0	0	0	4
Tracy City Police Department	5	0	0	0	5
Trenton Police Department	16	1	0	6	23



Agency	LE Male	LE Female	Civ Male	Civ Female	Total
Trezevant Police Department	1	0	0	0	1
Tri-Cities Airport Public Safety Department	14	0	0	0	14
Trimble Police Department	1	0	0	0	1
Troy Police Department	4	0	0	0	4
Tullahoma Police Department	34	3	1	4	42
Tusculum Police Department	2	0	0	0	2
Unicoi County Sheriffs Office	25	1	8	4	38
Union City Police Department	30	2	1	9	42
Union County Sheriffs Office	21	3	8	5	37
University of Memphis	30	3	0	6	39
University of Tennessee at Chattanooga	13	4	6	5	28
University of Tennessee at Knoxville	40	10	23	11	84
University of Tennessee at Martin	12	1	0	4	17
University of Tennessee Health Science Center	17	7	12	15	51
University of the South	12	2	1	3	18
Van Buren County Sheriffs Office	10	0	4	3	17
Vanderbilt University	75	15	40	34	164
Volunteer State Community College	4	0	0	1	5
Vonore Police Department	8	1	0	0	9
Walters State Community College	6	2	0	0	8
Warren County Sheriffs Office	41	1	23	16	81
Warriors Path State Park	5	0	0	0	5
Wartburg Police Department	4	0	0	0	4
Wartrace Police Department	1	0	0	1	2
Washington County Sheriffs Office	80	10	80	45	215
Watauga Police Department	1	0	0	0	1
Watertown Police Department	4	0	0	0	4
Waverly Police Department	12	0	0	1	13
Wayne County Sheriffs Office	14	0	17	16	47
Waynesboro Police Department	8	0	0	0	8
Weakley County Sheriffs Office	20	2	12	9	43
West Tennessee Judicial Drug Task Force	6	0	0	1	7
Westmoreland Police Department	6	1	2	2	11
White Bluff Police Department	5	0	0	0	5
White County Sheriffs Office	30	2	21	14	67



<b>Agency</b>	<b>LE Male</b>	<b>LE Female</b>	<b>Civ Male</b>	<b>Civ Female</b>	<b>Total</b>
White House Police Department	16	3	0	3	22
White Pine Police Department	8	0	0	1	9
Whiteville Police Department	5	1	0	0	6
Whitwell Police Department	5	0	0	0	5
Williamson County Sheriffs Office	96	14	61	45	216
Wilson County Sheriffs Office	86	6	88	39	219
Winchester Police Department	24	0	1	0	25
Winfield Police Department	1	0	0	0	1
Woodbury Police Department	8	0	0	1	9

